

SPECIALIST DEALER PRICELIST – APRIL 2024



ALPINE STATUS

INDASH 2-DIN
DISPLAY AUDIO

ALPINE HALO

HALO SOLUTIONS
FOR UTES

LANDCRUISER 9"
SOLUTIONS

VEHICLE SOLUTIONS

DRIVE ASSIST CAMERAS

MEDIA RECEIVERS
/ PLAYERS

VEHICLE SPECIFIC
SOUND

EV-SERIES
FOR TESLA

DIGITAL PRECISION
SERIES

R-SERIES
AMPLIFIERS

R-SERIES
SPEAKERS

R-SERIES
SUBWOOFERS

S-SERIES
AMPLIFIERS

S-SERIES
SPEAKERS

S-SERIES
SUBWOOFERS

ENTRY SPEAKERS

COMPACT AMPLIFIERS

OPTIM™ AUDIO
PROCESSORS

AUDIO PROCESSOR
AMPLIFIERS

POWERED
SUBWOOFERS

BASS SERIES
SUBWOOFERS

MARINE AND
POWERSPORTS

ACCESSORIES

Individual orders less than \$300 Ex GST Dealer Price
a flat rate freight charge of \$25 Inc GST applies.

Prices, models and/or specifications are subject to change without notice. E. & O.E. All orders are subject to acceptance by Alpine Electronics of Australia Pty. Ltd. The recommended retail price is provided as an indication only and there is no obligation to comply with such price. Prices shown may vary at invoice due to decimal rounding. All prices include Australian Goods & Services Tax (GST) of 10%.

ALPINE STATUS HEAD UNIT / AMPLIFIERS / AUDIO PROCESSOR



HDS-990

Alpine Status High-Resolution Digital Media Player

- Hi-Res Audio Media Player
- Colour display
- 3 USB Ports (1 front / 2 back ports) for audio playback
- Bluetooth Audio Streaming (LDAC, aptX HD)
- 4x 50Watts built-in amplifier
- 6-channel 31-band Parametric EQ
- 3-way digital X-Over
- MP3, WMA, AAC, MP4, WAV, FLAC, APE and DSD playback
- 4-channel high-level inputs
- 2-channel AUX inputs (RCA)
- 4-channel high-level outputs (4x 50 Watts)
- 6-channel RCA outputs
- Optical TOSLINK output
- Coaxial output
- Rotary encoder
- Blue button illumination

Recommended
Retail Price

\$2,299.95

Single (Inc GST)

\$1,494.35



HDA-V90

Alpine Status High-Resolution 5/3 Channel Amplifier

- Hi-Res Audio Playback
- 75W x 4, 300W x 1 (4Ω)
- 100W x 4, 500W x 1 (2Ω)
- Selectable 2/4/6ch input
- Damping Factor
- CH1-4: >500, CH-5: >1,000
- Freq Response: 8-60kHz (-3dB)
- Selectable Input Level - HI/LO

Recommended
Retail Price

\$1,399.95

Single (Inc GST)

\$909.35

4 Buy (Inc GST)

\$863.88



HDA-F60

Alpine Status High-Resolution 4/3/2 Channel Amplifier

- Hi-Res Audio Playback
- 100W x 4 (4Ω), 150W x 4 (2Ω)
- Bridged 300W x 2 (4Ω)
- High-Efficiency Circuit Design
- Damping Factor >500
- Freq Response: 10-60kHz (-3dB)
- Selectable Input Level - HI/LO
- Selectable 2/4ch input

Recommended
Retail Price

\$1,199.95

Single (Inc GST)

\$779.35

HDA-M80

Alpine Status High-Power Mono Amplifier

- 800W x 1 (2Ω), 500W x 1 (4Ω)
- High Bandwidth Amplifier
- Class D Circuit Design
- High-Efficiency Circuit Design
- Damping Factor >1500
- Freq Response: 8-400Hz (-3dB)
- Selectable Input Level - HI/LO
- Variable Subsonic Filter (SWF)

Recommended
Retail Price

\$1,199.95

Single (Inc GST)

\$779.35

RUX-C810

Remote Controller for Alpine Status HDP-D90

- Compatible with HDP-D90 and PXE-X800
- Rotary Encoder with Blue Illumination
- LCD Display
- Control Processor Function
- Included Installation Bracket

Recommended
Retail Price

\$149.95

Single (Inc GST)

\$101.97

Individual orders less than \$300 Ex GST Dealer Price
a flat rate freight charge of \$25 Inc GST applies.

Prices, models and/or specifications are subject to change without notice. E. & O.E. All orders are subject to acceptance by Alpine Electronics of Australia Pty. Ltd. The recommended retail price is provided as an indication only and there is no obligation to comply with such price. Prices shown may vary at invoice due to decimal rounding. All prices include Australian Goods & Services Tax (GST) of 10%.



ALPINE STATUS SPEAKERS



HDZ-653

6-1/2" 3-Way Alpine Status Hi-Res Audio Certified Audiophile Component Speaker Set

- 100W RMS
- Hi-Res Audio Certified
- Hybrid Carbon Woofer Cone
- Precision Alloy Cast Frame
- 300W Peak Power
- High-End Crossover Network
- 3.2cm Ring Radiator Tweeter
- Freq Response: 55Hz-40kHz

Recommended Retail Price **\$1,699.95**

Single (Inc GST) \$1,019.40



HDZ-65

6.5" Alpine Status Hi-Res Audio Certified Audiophile Coaxial Speaker Set

- 100W RMS
- Hi-Res Audio Certified
- Hybrid Carbon Woofer Cone
- 300W Peak Power
- Precision Alloy Cast Frame
- Freq Response: 55Hz-40kHz

Recommended Retail Price **\$799.95**

Single (Inc GST) \$479.40



HDZ-653S

6-1/2" 3-Way Alpine Status Hi-Res Audio Certified Audiophile Slim-Fit Component Speaker Set

- 100W RMS
- Hi-Res Audio Certified
- Hybrid Carbon Woofer Cone
- Precision Alloy Cast Frame
- 300W Peak Power
- High-End Crossover Network
- 3.2cm Ring Radiator Tweeter
- Freq Response: 55Hz-40kHz

Recommended Retail Price **\$1,599.95**

Single (Inc GST) \$959.40



HDZ-65C

6-1/2" 2-Way Alpine Status Hi-Res Audio Certified Audiophile Component Speaker Set

- 100W RMS
- Hi-Res Audio Certified
- Hybrid Carbon Woofer Cone
- Precision Alloy Cast Frame
- 300W Peak Power
- High-End Crossover Network
- 3.2cm Ring Radiator Tweeter
- Freq Response: 55Hz-40kHz

Recommended Retail Price **\$1,199.95**

Single (Inc GST) \$719.40



HDZ-65CS

6-1/2" 2-Way Alpine Status Hi-Res Audio Certified Audiophile Slim-Fit Component Speaker Set

- 100W RMS
- Hi-Res Audio Certified
- Hybrid Carbon Woofer Cone
- Precision Alloy Cast Frame
- 300W Peak Power
- High-End Crossover Network
- 3.2cm Ring Radiator Tweeter
- Freq Response: 55Hz-40kHz

Recommended Retail Price **\$1,099.95**

Single (Inc GST) \$659.40



HDZ-110

11" (28cm) High-Performance Alpine Status Audiophile Subwoofer Dual Voice Coil 20hm + 20hm

- 400W RMS
- Impedance: 2 Ohm + 2 Ohm
- Hybrid Carbon Woofer Cone
- 1200W Peak Power
- Precision Alloy Cast Frame
- Freq Response: 25Hz-300Hz

Recommended Retail Price **\$1,199.95**

Single (Inc GST) \$719.40

Individual orders less than \$300 Ex GST Dealer Price a flat rate freight charge of \$25 Inc GST applies.

Prices, models and/or specifications are subject to change without notice. E. & O.E. All orders are subject to acceptance by Alpine Electronics of Australia Pty. Ltd. The recommended retail price is provided as an indication only and there is no obligation to comply with such price. Prices shown may vary at invoice due to decimal rounding. All prices include Australian Goods & Services Tax (GST) of 10%.



INDASH 2-DIN DISPLAY AUDIO RECEIVERS



iLX-507Ai



7" HD Receiver with Wireless Apple CarPlay / Android Auto / Bluetooth® / Dual USB / HDMI / DAB+

- 7" WXGA Capacitive HD Display
- Wireless Hi-Res Audio
- Wireless Apple CarPlay
- Wireless Android Auto
- Built-In DAB+
- RDS (Radio Data System)
- FLAC/MP3/WMA/AAC/APE
- Video MP4/AVI/MKV
- Built-in Bluetooth®
- Dual Rear USB Inputs
- 3 PreOuts (4 Volt)
- iDataLink Maestro Ready
- Dual-Direct Camera Input or RCA with optional CAM-ALP-ADP
- Steering Wheel Control Ready
- Steering Wheel Cont. Ready
- HDMI Input + Output
- New Advanced UI
- 13-Band Parametric EQ
- 6CH Digital Time Correction
- Sub Level / Phase Adjust.
- HP/LP Crossovers
- Dual HD Parametric EQ
- MediaXpander HD
- 24-bit DAC
- 50Watts x 4 Built-in Amp

Recommended Retail Price **\$1,099.95**

Single (Inc GST) \$824.25
4 Buy (Inc GST) \$767.38



iLX-702D



7" Audio Visual Receiver with Apple CarPlay / Android Auto / Bluetooth® / USB / HDMI / DAB+ / Tunelt / App

- 7" WVGA Capacitive Display
- Apple CarPlay
- Android Auto
- Built-In DAB+
- RDS (Radio Data System)
- FLAC/MP3/WMA/AAC/MP4
- Video MP4/AVI/MKV
- Built-in Bluetooth®
- Rear USB / HDMI / AUX
- 3 PreOuts (4 Volt)
- UART/CAN Interface Ready
- Direct Camera Input or RCA with optional CAM-ALP-ADP
- Steering Wheel Control Ready
- Inbuilt Microphone
- Spotify Radio Ready
- Alpine Connect (Android Only)
- 9-Band Parametric EQ
- Digital Time Correction
- Sub Level / Phase Adjust.
- HP/LP Crossovers
- Dual HD Parametric EQ
- MediaXpander
- 24-bit DAC
- 50Watts x 4 Built-in Amp

Recommended Retail Price **\$799.95**

Single (Inc GST) \$639.20
2 Buy (Inc GST) \$598.93
4 Buy (Inc GST) \$559.30



iLX-407A



7" Audio Visual Receiver with Apple CarPlay / Android Auto / FLAC / MP3 / WMA / AAC / Bluetooth

- 7" WVGA Capacitive Display
- Shallow Chassis Design
- Dual Swipe Interface
- Built-In DAB+
- Apple CarPlay
- Android Auto
- FLAC/MP3/WMA/AAC
- MP4/AVI/WMV/MOV
- Built-in Bluetooth®
- Spotify Internet Radio Ready
- FM/AM Radio
- Rear AV Output / AUX Input
- Dual Camera Input via RCA
- 6CH Digital Time Correction
- Rear USB / HDMI / AUX
- 5-Band Graphic EQ
- 50Watts x 4 Built-in Amp
- 3 PreOuts (4 Volt)
- Steering Wheel Control Ready
- 24-bit DAC
- UART/CAN Interface Ready
- MediaXpander

Recommended Retail Price **\$769.95**

Single (Inc GST) \$576.75
4 Buy (Inc GST) \$538.34



iLX-W670A



6.75" Audio Visual Receiver with Apple CarPlay / Android Auto / FLAC / MP3 / WMA / AAC / Bluetooth

- 6.75" WVGA Capacitive Display
- Shallow Chassis Design
- FM/AM Radio
- Apple CarPlay
- Android Auto
- FLAC/MP3/WMA/AAC
- Video MP4/AVI/WMV/MOV
- Built-in Bluetooth®
- Rear AV Output / AUX Input
- Camera Input via RCA
- 5CH Digital Time Correction
- 13-Band Parametric EQ
- Learning Type Steering Controls
- Primalink Ready
- Customisable Wallpaper
- 4x Colour UI Selectable
- 1x Rear Mount USB
- 40Watts x 4 Built-in Amp
- 3 PreOuts (4 Volt)
- 24-bit DAC
- External GPS Circuit

Recommended Retail Price **\$599.95**

Single (Inc GST) \$449.25
8 Buy (Inc GST) \$419.30





iLX-F511Ai

11" HD Halo Receiver with Wireless Apple CarPlay/
Android Auto /Bluetooth®/ Dual USB / HDMI / DAB+

- 11" WXGA Capacitive Laminated HD Display
- Wireless Hi-Res Audio
- Wireless Apple CarPlay
- Wireless Android Auto
- Built-In DAB+
- RDS (Radio Data System)
- FLAC/MP3/WMA/AAC/APE
- Video MP4/AVI/MKV
- Built-in Bluetooth®
- Dual Rear USB Inputs
- 3 PreOuts (4 Volt)
- iDataLink Maestro Ready
- Steering Wheel Cont. Ready
- HDMI Input + Output
- New Advanced UI
- 13-Band Parametric EQ
- 6CH Digital Time Correction
- Sub Level / Phase Adjust.
- HP/LP Crossovers
- Dual HD Parametric EQ
- MediaXpander HD
- 24-bit DAC
- 50Watts x 4 Built-in Amp
- 50Watts x 4 Built-in Amp
- Dual-Direct Camera Input or RCA with optional CAM-ALP-ADP
- Steering Wheel Control Ready

Recommended
Retail Price **\$1,999.95**

Single (Inc GST) \$1,459.96

4 Buy (Inc GST) \$1,399.97

iLX-F511A

11" HD Halo Receiver with Wireless Apple CarPlay/
Android Auto /Bluetooth®/ Dual USB / HDMI / DAB+

Recommended
Retail Price **\$1,899.95**

Single (Inc GST) \$1,424.25

4 Buy (Inc GST) \$1,325.98

iLX-F509Ai

9" HD Halo Receiver with Wireless Apple CarPlay/
Android Auto /Bluetooth®/ Dual USB / HDMI / DAB+

- 9" WXGA Capacitive Laminated HD Display
- Wireless Hi-Res Audio
- Wireless Apple CarPlay
- Wireless Android Auto
- Built-In DAB+
- RDS (Radio Data System)
- FLAC/MP3/WMA/AAC/APE
- Video MP4/AVI/MKV
- Built-in Bluetooth®
- Dual Rear USB Inputs
- 3 PreOuts (4 Volt)
- iDataLink Maestro Ready
- Steering Wheel Cont. Ready
- HDMI Input + Output
- New Advanced UI
- 13-Band Parametric EQ
- 6CH Digital Time Correction
- Sub Level / Phase Adjust.
- HP/LP Crossovers
- Dual HD Parametric EQ
- MediaXpander HD
- 24-bit DAC
- 50Watts x 4 Built-in Amp
- 50Watts x 4 Built-in Amp
- Dual-Direct Camera Input or RCA with optional CAM-ALP-ADP
- Steering Wheel Control Ready

Recommended
Retail Price **\$1,599.95**

Single (Inc GST) \$1,199.25

4 Buy (Inc GST) \$1,118.90

iNE-F409E

9" Halo9 Primo 3.0 Navigation with Apple CarPlay/
Android Auto / Bluetooth® / USB / DAB+ / Receiver

- 9" WVGA Capacitive Display
- Precision GPS/GLONASS
- Apple CarPlay
- Android Auto
- Built-In DAB+
- RDS (Radio Data System)
- FLAC/MP3/WMA/AAC
- Video MP4/AVI/MKV
- Built-in Bluetooth®
- Rear USB / HDMI / AUX
- 3 PreOuts (4 Volt)
- UART/CAN Interface Ready
- Direct Camera Input or RCA with optional CAM-ALP-ADP
- Steering Wheel Control Ready
- Tilt, Reach and Height Adjust
- Alpine Connect (Android Only)
- Spotify Radio Ready
- Alpine Connect (Android Only)
- 9-Band Parametric EQ
- Digital Time Correction
- HP/LP Crossovers
- Dual HD Parametric EQ
- MediaXpander
- 24-bit DAC
- 50Watts x 4 Built-in Amp

Recommended
Retail Price **\$1,899.95**

Single (Inc GST) \$1,329.29

4 Buy (Inc GST) \$1,234.39

iLX-F309E

9" Halo9 Receiver with Apple CarPlay / Android Auto
/Bluetooth® / USB / HDMI / DAB+

- 9" WVGA Capacitive Display
- Apple CarPlay
- Android Auto
- Built-In DAB+
- RDS (Radio Data System)
- FLAC/MP3/WMA/AAC
- Video MP4/AVI/MKV
- Built-in Bluetooth®
- Rear USB / HDMI / AUX
- 3 PreOuts (4 Volt)
- UART/CAN Interface Ready
- RCA Camera Input
- Steering Wheel Control Ready
- Tilt, Reach and Height Adjust
- Spotify Radio Ready
- 9-Band Parametric EQ
- Digital Time Correction
- Sub Level / Phase Adjust.
- HP/LP Crossovers
- Dual HD Parametric EQ
- MediaXpander
- 24-bit DAC
- 50Watts x 4 Built-in Amp

Recommended
Retail Price **\$1,299.95**

Single (Inc GST) \$883.32

4 Buy (Inc GST) \$839.16





TOYOTA HILUX N80

Premium Halo Solutions for Toyota Hilux

Vehicle Compatibility

■ Hilux N80 1st & 2nd Gen ■ Compatible 2015-2020

Main Features

- Wireless Apple CarPlay & Android Auto
- WXGA High-Definition Display • Hi-Res Audio Certified
- Smartphone Navigation
- TIDAL Built-in
- DAB+ & Spotify
- Built-in Class-D Amplifier
- Advanced Sound Tuning
- Built-in Bluetooth
- 2x USB Connections
- HDMI Connectivity
- Dual Camera Input

Recommended Retail Price **\$2,249.95**

HILUX15-F511A (Inc GST) \$1,574.30

• iLX-F511A • PFK-HILUX15 • KAE-1DT

Recommended Retail Price **\$1,949.95**

HILUX15-F509A (Inc GST) \$1,364.30

• iLX-F509A • PFK-HILUX15 • KAE-1DT



TOYOTA HILUX N80

Premium Halo Solutions for Toyota Hilux

Vehicle Compatibility

■ Hilux N80 3rd Gen ■ Compatible 2020>2022
■ Not Compatible with 360 Degree Camera

Main Features

- Wireless Apple CarPlay & Android Auto
- WXGA High-Definition Display • Hi-Res Audio Certified
- Smartphone Navigation
- TIDAL Built-in
- DAB+ & Spotify
- Built-in Class-D Amplifier
- Advanced Sound Tuning
- Built-in Bluetooth
- 2x USB Connections
- HDMI Connectivity
- Dual Camera Input –

Recommended Retail Price **\$2,299.95**

HILUX20-F511A (Inc GST) \$1,629.30

• iLX-F511A • PFK-HILUX20 • KAE-1DT

Recommended Retail Price **\$1,949.95**

HILUX20-F509A (Inc GST) \$1,364.30

• iLX-F511A • PFK-HILUX20 • KAE-1DT



ISUZU D-MAX

Premium Halo Solutions for Isuzu D-MAX

Vehicle Compatibility

■ Isuzu D-MAX ■ Compatible 2020>

Main Features

- Wireless Apple CarPlay & Android Auto
- WXGA High-Definition Display • Hi-Res Audio Certified
- Smartphone Navigation
- TIDAL Built-in
- DAB+ & Spotify
- Built-in Class-D Amplifier
- Advanced Sound Tuning
- Built-in Bluetooth
- 2x USB Connections
- HDMI Connectivity
- Dual Camera Input

Recommended Retail Price **\$2,599.95**

DMAX20-F511A (Inc GST) \$1,819.30

• iLX-F511A • PFK-DMAX20 • KAE-1DT

Recommended Retail Price **\$2,299.95**

DMAX20-F509A (Inc GST) \$1,609.30

• iLX-F509A • PFK-DMAX20 • KAE-1DT



FORD RANGER PX II

Premium Halo Solutions for Ford Ranger and Everest

Vehicle Compatibility

■ Suits Ford Ranger PX II XL and XLS Only, Everest UA Ambiente
■ Compatible 2016-2019

Main Features

- Wireless Apple CarPlay & Android Auto
- WXGA High-Definition Display • Hi-Res Audio Certified
- Smartphone Navigation
- TIDAL Built-in
- DAB+ & Spotify
- Built-in Class-D Amplifier
- Advanced Sound Tuning
- Built-in Bluetooth
- 2x USB Connections
- HDMI Connectivity
- Dual Camera Input

Recommended Retail Price **\$2,499.95**

RANGER16-F511A (Inc GST) \$1,749.30

• iLX-F511A • PFK8-RANGER16

Recommended Retail Price **\$2,199.95**

RANGER16-F509A (Inc GST) \$1,539.40

• iLX-F509A • PFK8-RANGER16



UTE HALO SOLUTIONS



MAZDA BT-50

Premium Infotainment Solutions for Mazda BT-50

Vehicle Compatibility

- Mazda BT-50
- Compatible 2012-2019

Main Features

- Wired Apple CarPlay & Android Auto
- WVGA Capacitive Display
- Smartphone Navigation
- DAB+ & Spotify
- Built-in Amplifier
- Advanced Sound Tuning
- Built-in Bluetooth
- 1x USB Connections
- HDMI Connectivity
- Direct Camera Input
- Factory audio models requires hazard & door lock keys for installation. Mazda part: UC2B-66-660A & UC2B-66-4H0A



Factory Audio Unit (AHU)



Factory Navi Unit (NHU)

Recommended Retail Price **\$2,099.95**

BT50-F409-AHU (Inc GST) \$1,469.97

BT50-F409-NHU (Inc GST) \$1,469.97

•INE-F409E • BT50-HALO-AHU –or– •BT50-HALO-NHU

Recommended Retail Price **\$1,499.95**

BT50-F309-AHU (Inc GST) \$1,049.97

BT50-F309-NHU (Inc GST) \$1,049.97

•ILX-F309E • BT50-HALO-AHU –or– •BT50-HALO-NHU



NISSAN NAVARA ST-X

Premium Infotainment Solutions for Nissan Navara

Vehicle Compatibility

- Navara NP300 ST-X
- Compatible 2015-2019
- Not compatible with factory AC/AA Models

Main Features

- Wireless Apple CarPlay & Android Auto
- WXGA High-Definition Display • Hi-Res Audio Certified
- Smartphone Navigation
- TIDAL Built-in
- DAB+ & Spotify
- Built-in Class-D Amplifier
- Advanced Sound Tuning
- Built-in Bluetooth
- 2x USB Connections
- HDMI Connectivity
- Dual Camera Input

Recommended Retail Price **\$2,199.95**

NAVARA-F511A-STX (Inc GST) \$1,539.30

•iLX-F511A • PFK8-NAVARA-STX • KCU-Y60HU • NIS-HDMI01
• KAE-242DA-R • CAM-ALP-ADP

Recommended Retail Price **\$1,899.95**

NAVARA-F509-STX (Inc GST) \$1,329.30

•iLX-F509A • PFK8-NAVARA-STX • KCU-Y60HU • NIS-HDMI01
• KAE-242DA-R • CAM-ALP-ADP



NISSAN NAVARA ST

Premium Infotainment Solutions for Nissan Navara

Vehicle Compatibility

- Navara NP300 ST
- Compatible 2015-2019
- STX kit required for ST models with factory navigation

Main Features

- Wireless Apple CarPlay & Android Auto
- WXGA High-Definition Display • Hi-Res Audio Certified
- Smartphone Navigation
- TIDAL Built-in
- DAB+ & Spotify
- Built-in Class-D Amplifier
- Advanced Sound Tuning
- Built-in Bluetooth
- 2x USB Connections
- HDMI Connectivity
- Dual Camera Input – Not Compatible with 360° Camera

Recommended Retail Price **\$2,199.95**

NAVARA-F511A-ST (Inc GST) \$1,539.30

•iLX-F511A • PFK8-NAVARA-ST • KCU-Y60HU • NIS-HDMI01
• KAE-242DA-R • CAM-ALP-ADP

Recommended Retail Price **\$1,899.95**

NAVARA-F509-ST (Inc GST) \$1,329.30

•iLX-F509A • PFK8-NAVARA-ST • KCU-Y60HU • NIS-HDMI01
• KAE-242DA-R • CAM-ALP-ADP



NISSAN NAVARA DX / RX

Premium Infotainment Solutions for Nissan Navara

Vehicle Compatibility

- Navara NP300 DX/RX
- Compatible 2015-2019
- Not compatible with factory CP/AA Models

Main Features

- Wireless Apple CarPlay & Android Auto
- WXGA High-Definition Display • Hi-Res Audio Certified
- Smartphone Navigation
- TIDAL Built-in
- DAB+ & Spotify
- Built-in Class-D Amplifier
- Advanced Sound Tuning
- Built-in Bluetooth
- 2x USB Connections
- HDMI Connectivity
- Dual Camera Input

Recommended Retail Price **\$2,199.95**

NAVARA-F511A-DXRX (Inc GST) \$1,539.30

•iLX-507A • PFK8-NAVARA-DXRX • KCU-Y60HU • NIS-HDMI01
• KAE-242DA-R • CAM-ALP-ADP

Recommended Retail Price **\$1,899.95**

NAVARA-F509-DXRX (Inc GST) \$1,329.30

•iLX-F509A • PFK8-NAVARA-DXRX • KCU-Y60HU • NIS-HDMI01
• KAE-242DA-R • CAM-ALP-ADP

Individual orders less than \$300 Ex GST Dealer Price
a flat rate freight charge of \$25 Inc GST applies.

Prices, models and/or specifications are subject to change without notice. E. & O.E. All orders are subject to acceptance by Alpine Electronics of Australia Pty. Ltd. The recommended retail price is provided as an indication only and there is no obligation to comply with such price. Prices shown may vary at invoice due to decimal rounding. All prices include Australian Goods & Services Tax (GST) of 10%.





RUE-BK01A

Wireless Rotary Knob with Volume / Camera Select

- Connects Wirelessly using Bluetooth
- Control Volume with Dial Turn
- Toggle between Camera views with Dial Push
- Compatible with models

iLX-507A
iLX-F509A (Screen Mount Compatible)
iLX-F511A (Screen Mount Compatible)

**Recommended
Retail Price** **\$149.95**

Single (Inc GST) \$104.97

4 Buy (Inc GST) \$102.17



KAE-1DT

1-DIN Top-Mount Blank Plate for iLX-F511A / F509A

- Create seamless install for installation of bottom mounted Halo

**Recommended
Retail Price** **\$34.95**

Single (Inc GST) \$24.47

3 Buy (Inc GST) \$23.24

9 Buy (Inc GST) \$20.92



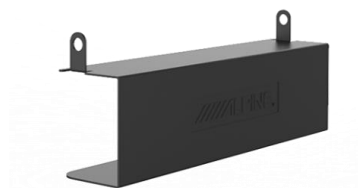
KAE-HF11DA

Anti-Reflective Screen Protect Film for iLX-F511A

- Direct-fit Screen Protector for Halo11 - iLX-F511A
- Anti-Fingerprint Film
- Anti-Reflective Film
- Includes:
 - Screen Protector Film
 - Microfibre Cloth
 - Screen Applicator Tool
 - Dust Removal Sticker

**Recommended
Retail Price** **\$49.95**

Single (Inc GST) \$34.30



KAE-1DB

1-DIN Bottom-Mount Blank Plate for iLX-F511A/F509A

- Create seamless install for installation of top mounted Halo

**Recommended
Retail Price** **\$34.95**

Single (Inc GST) \$24.47

3 Buy (Inc GST) \$23.24

9 Buy (Inc GST) \$20.92



KAE-HF9DA

Anti-Reflective Screen Protect Film for iLX-F509A

- Direct-fit Screen Protector for Halo9 - iLX-F509A
- Anti-Fingerprint Film
- Anti-Reflective Film
- Includes:
 - Screen Protector Film
 - Microfibre Cloth
 - Screen Applicator Tool
 - Dust Removal Sticker

**Recommended
Retail Price** **\$49.95**

Single (Inc GST) \$34.30



KAE-1DPLT

1-DIN Blanking Plate for Alpine Halo9 Series

- For Use with Alpine Halo Head Units - iNE-F409E, iLX-F309E

**Recommended
Retail Price** **\$34.95**

Single (Inc GST) \$24.47

3 Buy (Inc GST) \$23.24

9 Buy (Inc GST) \$20.92



KTX-HF9

Antiglare Protect Film for Alpine Halo9 Series

- Protects the display from finger prints and improves visibility
- Suitable for Alpine Halo9 Models;
 - iLX-F259E
 - iLX-F269E
 - iLX-F309E
 - iNE-F409E

**Recommended
Retail Price** **\$49.95**

Single (Inc GST) \$34.30



LANDCRUISER 9" SOLUTIONS

ALPINE PROFESSIONAL DEALER INSTALL ONLY



TOYOTA LANDCRUISER 70 SERIES

Premium 9" Infotainment Systems for LandCruiser

Vehicle Compatibility



■ LandCruiser 70 Series ■ Compatible 2009>

Main Features

- Wireless Apple CarPlay
- Android Auto
- WXGA High-Definition Display • Hi-Res Audio Certified
- Smartphone Navigation
- TIDAL Built-in
- DAB+ & Spotify
- Built-in Class-D Amplifier
- Advanced Sound Tuning
- Built-in Bluetooth
- 2x USB Connections
- HDMI Connectivity
- Dual Camera Input
- iDataLink Maestro Ready

Recommended Retail Price **\$2,899.95**

i905i-LC70 (Inc GST) \$2,029.30



TOYOTA LANDCRUISER 200 SERIES

Premium 9" Infotainment Systems for LandCruiser

Vehicle Compatibility



■ LandCruiser 70 Series ■ Compatible 2007-2015

Main Features

- Wireless Apple CarPlay
- Android Auto
- WXGA High-Definition Display • Hi-Res Audio Certified
- Smartphone Navigation
- TIDAL Built-in
- DAB+ & Spotify
- Built-in Class-D Amplifier
- Advanced Sound Tuning
- Built-in Bluetooth
- 2x USB Connections
- HDMI Connectivity
- Dual Camera Input
- iDataLink Maestro Ready

Recommended Retail Price **\$2,899.95**

i905i-LC08 (Inc GST) \$2,029.30



TOYOTA LANDCRUISER 200 SERIES

Premium 9" Infotainment Systems for LandCruiser

Vehicle Compatibility



■ LandCruiser 200 Series ■ Compatible 2016-2021

Main Features

- Wireless Apple CarPlay
- Android Auto
- WXGA High-Definition Display • Hi-Res Audio Certified
- Smartphone Navigation
- TIDAL Built-in
- DAB+ & Spotify
- Built-in Class-D Amplifier
- Advanced Sound Tuning
- Built-in Bluetooth
- 2x USB Connections
- HDMI Connectivity
- Dual Camera Input
- iDataLink Maestro Ready

Recommended Retail Price **\$2,899.95**

i905i-LC16 (Inc GST) \$2,029.30

TOYOTA LANDCRUISER 70 SERIES

Premium 9" Infotainment Systems for LandCruiser

- Steering Control Interface
- Antenna Adapter



Recommended Retail Price **\$2,999.95**

i905i-LC70-24 (Inc GST) \$2,099.97

Individual orders less than \$300 Ex GST Dealer Price
a flat rate freight charge of \$25 Inc GST applies.

Prices, models and/or specifications are subject to change without notice. E. & O.E. All orders are subject to acceptance by Alpine Electronics of Australia Pty. Ltd. The recommended retail price is provided as an indication only and there is no obligation to comply with such price. Prices shown may vary at invoice due to decimal rounding. All prices include Australian Goods & Services Tax (GST) of 10%.





HOLDEN VE COMMODORE (SERIES II)

Halo Solutions for Holden Commodore

Vehicle Compatibility

■ SV6, SS, SSV, HSV ■ Compatible 2010 - 2013

Recommended
Retail Price **\$3,099.95**

VES2G2B-F511A (Inc GST) **\$2,246.78**

• iLX-F511A • PFK-VES2G2-B

Recommended
Retail Price **\$2,799.95**

VES2G2B-F509A (Inc GST) **\$2,029.28**

• iLX-F509A • PFK-VES2G2-B

Recommended
Retail Price **\$2,299.95**

VES2G1B-F309 (Inc GST) **\$1,723.50**

• iLX-F309E • PFK-VES2G1-B



HOLDEN VE COMMODORE (SERIES II)

Halo Solutions For Holden Commodore

Vehicle Compatibility

■ Omega, Berlina, Calais (V) ■ Compatible 2010 - 2013

Recommended
Retail Price **\$3,099.95**

VES2G2S-F511A (Inc GST) **\$2,246.78**

• iLX-F511A • PFK-VES2G2-S

Recommended
Retail Price **\$2,799.95**

VES2G2S-F509A (Inc GST) **\$2,029.28**

• iLX-F509A • PFK-VES2G2-S

Recommended
Retail Price **\$2,299.95**

VES2G1S-F309 (Inc GST) **\$1,723.50**

• iLX-F309E • PFK-VES2G1-S

• iLX-407A • PFK-VES1G3 (Includes Temperature Sensor for Single Zone AirCon models)

**Individual orders less than \$300 Ex GST Dealer Price
a flat rate freight charge of \$25 Inc GST applies.**

Prices, models and/or specifications are subject to change without notice. E. & O.E. All orders are subject to acceptance by Alpine Electronics of Australia Pty. Ltd. The recommended retail price is provided as an indication only and there is no obligation to comply with such price. Prices shown may vary at invoice due to decimal rounding. All prices include Australian Goods & Services Tax (GST) of 10%.





AUDI A4 / A5

Premium Infotainment System for Audi A4 & A5

Vehicle Compatibility

■ Audi A4/A5 ■ Compatible 2007-2015

Recommended
Retail Price **\$3,599.95**

X703D-A45R (Inc GST) **\$2,519.30**

• X703D-A • PFK- A45R • KAE-242DA-R • Compatible with Audi A4 and A5



AUDI Q5

Premium Infotainment System for Audi Q5

Vehicle Compatibility

■ Audi Q5 ■ Compatible 2009-2015

Recommended
Retail Price **\$3,599.95**

X703D-Q5R (Inc GST) **\$2,663.10**

• X703D-A • PFK- Q5RD • KAE-242DA-R • Compatible with Audi Q5



BMW E46

7" Solution for BMW E46

Vehicle Compatibility

■ BMW E46 ■ Compatible 1998-2004

Recommended
Retail Price **\$1799.95**

ILX-705E46 (Inc GST) **\$1313.27**

- Specially modified iLX-705D • KAE-242DA-R
- Wireless Apple CarPlay
- Android Auto

** Additional BMW Parts may be required for factory Single-DIN models, consult your dealer for more information.

Recommended
Retail Price **\$119.95**

KWE-E46EXT (Inc GST) **\$80.32**

- Optional Harness for BMW E46 Solution • For vehicles with original radio black-box installed in the boot



DISPLAY AUDIO 2-DIN UTE SOLUTIONS

ALPINE PROFESSIONAL DEALER INSTALL ONLY



NISSAN NAVARA

7" Solutions for Nissan Navara NP300

Vehicle Compatibility

■ Nissan Navara NP300 ■ Factory CP/AA Vehicles not supported

Recommended Retail Price **\$1,399.95**

NAVARA-507A-STX (Inc GST) \$979.30

• ILX-507A • PFK-NAVARA-STX • KCU-Y60HU • CAM-ALP-ADP

Recommended Retail Price **\$1,399.95**

NAVARA-507A-ST (Inc GST) \$979.30

• ILX-507A • PFK-NAVARA-STX • KCU-Y60HU • CAM-ALP-ADP

Recommended Retail Price **\$1,399.95**

NAVARA-507A-DXR (Inc GST) \$979.30

• ILX-507A • PFK-NAVARA-DXR • KCU-Y60HU • CAM-ALP-ADP

Recommended Retail Price **\$1,099.95**

NAVARA-407A-STX (Inc GST) \$769.30

• ILX-407A • PFK-NAVARA-STX • KCU-Y60HU • CAM-ALP-ADP

Recommended Retail Price **\$999.95**

NAVARA-407A-ST (Inc GST) \$699.30

• ILX-407A • PFK-NAVARA-ST • KCU-Y60HU • CAM-ALP-ADP

Recommended Retail Price **\$999.95**

NAVARA-407A-DXR (Inc GST) \$699.30

• ILX-407A • PFK-NAVARA-DXR • KCU-Y60HU • CAM-ALP-ADP



MAZDA BT-50

7" Solutions for Mazda BT-50

Vehicle Compatibility

■ Mazda BT-50 ■ Compatible 2012-2019

Recommended Retail Price **\$1,299.95**

BT50-NHU-507A (Inc GST) \$844.35

• BT50-NHU5-7 • ILX-507A • KAE-2XDA-BT50

Recommended Retail Price **\$1,299.95**

BT50-AHU-507A (Inc GST) \$844.35

• BT50-AHU5-7 • ILX-507A • KAE-2XDA-BT50

Recommended Retail Price **\$999.95**

BT50-702D-NHU (Inc GST) \$699.53

• BT50-NHU2-7 • ILX-702D • KAE-2XDA-BT50

Recommended Retail Price **\$999.95**

BT50-702D-AHU (Inc GST) \$699.53

• BT50-NHU2-7 • ILX-702D • KAE-2XDA-BT50



MAZDA BT-50

7" Solutions for Mazda BT-50

Vehicle Compatibility

■ Mazda BT-50 ■ Compatible 2012-2019

Promotional Price **\$899.95**

BT50-NHU-407A (Inc GST) \$629.30

• BT50-NHU4-7 • ILX-407A • KAE-2XDA-BT50

Promotional Price **\$899.95**

BT50-AHU-407A (Inc GST) \$629.30

• BT50-AHU4-7 • ILX-407A • KAE-2XDA-BT50



MAZDA BT-50

Rear View Camera Solutions for Mazda BT-50

Vehicle Compatibility

■ Mazda BT-50 ■ Compatible 2012-2019

Recommended Retail Price **\$229.95**

BT50-C1100PK (Inc GST) \$149.47

• MAZDA BT50 CAMERA FOR PICKUP VEHICLE

Recommended Retail Price **\$229.95**

BT50-C1100TR (Inc GST) \$149.47

• MAZDA BT50 CAMERA FOR TRAY VEHICLE



Factory Audio Unit (AHU)



Factory Navi Unit (NHU)

Individual orders less than \$300 Ex GST Dealer Price a flat rate freight charge of \$25 Inc GST applies.

Prices, models and/or specifications are subject to change without notice. E. & O.E. All orders are subject to acceptance by Alpine Electronics of Australia Pty. Ltd. The recommended retail price is provided as an indication only and there is no obligation to comply with such price. Prices shown may vary at invoice due to decimal rounding. All prices include Australian Goods & Services Tax (GST) of 10%.



DRIVE ASSIST CAMERAS



HCE-C2100RD

MultiView HDR Rear Drive Assist Camera

- Alpine High Dynamic Range Rear Multiview Camera
- Only Compatible with Direction Connection Head Units
- Touch Control: Rear, Corner, Ground & Panorama Modes

Recommended Retail Price	\$349.95
Single (Inc GST)	\$244.30
4 Buy (Inc GST)	\$226.85



HCE-C2600FD

MultiView HDR Front Drive Assist Camera

- Alpine High Dynamic Range Front Multiview Camera
- Only Compatible with Direction Connection Head Units
- Touch Control: Front, Corner, Ground & Panorama Modes

Recommended Retail Price	\$349.95
Single (Inc GST)	\$244.30
4 Buy (Inc GST)	\$226.85



HCE-C1100

RCA Connection HDR Rear View Camera

- High Dynamic Range Rear View Camera
- Composite (NTSC) RCA Connection Camera

Recommended Retail Price	\$199.95
Single (Inc GST)	\$139.30
4 Buy (Inc GST)	\$119.40



HCE-C201RD

Direct Connect Rear View Camera

- Rear Camera for ILX-702D, INE-W987A, X308AU, X902D-F
- Multi-View Functionality for i109AD, i108D, iXE-W400E

Recommended Retail Price	\$199.95
Single (Inc GST)	\$139.30
4 Buy (Inc GST)	\$129.35



DRIVE ASSIST CAMERA ACCESSORIES



KCX-C250MC

Multi-Camera Selector Interface

- Connection of Multiple Cameras to your Alpine System
- 3 Direct Camera Inputs / selectable from the touch screen
- Compatible with iLX-702D, INE-W987A and X308AU

Recommended Retail Price **\$379.95**

Single (Inc GST) \$265.30



CAM-ALP-ADP

Direct to RCA Adaptor

- Direct to RCA Camera Adaptor
- Compatible with iLX-702D, INE-W987A and X308AU
- Allows for RCA Factory Camera Retention

Recommended Retail Price **\$29.95**

Single (Inc GST) \$20.97

10 Buy (Inc GST) \$17.97



KCX-C2600B

Front and Rear Camera Expansion Box with Controller

- Enables Front and Rear Camera Configurations
- Includes Switch to change between Cameras
- Compatible with HCE-C2100RD and HCE-C2600FD

Recommended Retail Price **\$199.95**

Single (Inc GST) \$139.30



HCE-TCAM1-WRA

Camera System for Wrangler

- Spare Tyre Rear View Camera and Light System for Wrangler
- Kit Includes all installations Parts

Recommended Retail Price **\$569.95**

Single (Inc GST) \$398.30



KCX-180203

Front & Rear Camera System

- Includes KCX-C250MC, HCE-C2100RD & HCE-C2600FD
- Compatible with iLX-702D, INE-W987A, X308AU, X/i902D
- Select Camera View From Touchscreen

Recommended Retail Price **\$749.95**

Single (Inc GST) \$524.30



KCX-210106

Front, Rear, plus Factory Camera System

- Includes KCX-C250MC, HCE-C2100RD, HCE-C2600FD & CAM-ALP-ADP
- Compatible with iLX-702D, INE-W987A, X308AU, X/i902D

Recommended Retail Price **\$759.95**

Single (Inc GST) \$516.12



KCX-180206

Rear & Trailer Camera System

- Includes KCX-C250MC and 2 x HCE-C2100RD
- Compatible with iLX-702D, INE-W987A, X308AU, X/i902D
- Select Camera View From Touchscreen

Recommended Retail Price **\$749.95**

Single (Inc GST) \$524.30

Individual orders less than \$300 Ex GST Dealer Price a flat rate freight charge of \$25 Inc GST applies.

Prices, models and/or specifications are subject to change without notice. E. & O.E. All orders are subject to acceptance by Alpine Electronics of Australia Pty. Ltd. The recommended retail price is provided as an indication only and there is no obligation to comply with such price. Prices shown may vary at invoice due to decimal rounding. All prices include Australian Goods & Services Tax (GST) of 10%.



Hi-RES AUDIO DIGITAL MEDIA PLAYER / MEDIA RECEIVERS



UTX-A09 PRO

Hi-Res Audio Digital Media AM/FM Receiver with Bluetooth (Audio and HFT) and Dual USB

- Hi-Res Audio Certified
- Navi Mix Function
- 2.4-inch TFT display control.
- Highly Flexible Installation
- Separated Black Box
- 9-Band Parametric EQ
- Dual USB (Front and Rear)
- Digital Time Correction
- AM/FM Tuner
- Sub Level / Phase Adjust.
- Built-in Bluetooth® H/Free
- Digital HP/BP/LP Crossover
- Built-in Bluetooth® Audio
- MediaXpander HD
- Auxiliary Input (3.5mm)
- 24-bit DAC
- 3 PreOuts (4 Volt)
- FLAC/MP3/WMA/AAC
- 22Watts x 4 Built-in Amp
- WAV/APE

Recommended Retail Price **\$999.95**

Single (Inc GST) \$699.30



UTX-M08S

Hi-Res Audio Digital Media Player with Bluetooth Audio and Dual USB

- Hi-Res Audio Certified
- Navi Mix Function
- 2.4-inch TFT display control.
- Highly Flexible Installation
- Separated Black Box
- 9-Band Parametric EQ
- Dual USB (Front and Rear)
- Digital Time Correction
- FLAC/APE/DSD Hi-Res Audio
- Sub Level / Phase Adjust.
- Built-in Bluetooth® Audio
- Digital HP/BP/LP Crossover
- Auxiliary Input (3.5mm)
- MediaXpander HD
- 3 PreOuts (4 Volt)
- 24-bit DAC
- WAV/MP3/WMA/AAC
- 25Watts x 4 Built-in Amp

Recommended Retail Price **\$799.95**

Single (Inc GST) \$559.30



UTE-73EBT

Digital Media Receiver with Bluetooth® / USB / AUX / iPod® and iPhone® / FLAC / Tunelt

- 50Watts x 4 Built-in Amp
- 3-Band Parametric EQ
- AM/FM Receiver
- Bass Engine SQ
- Made for iPod® / iPhone®
- Sub Level Control.
- WMA/AAC/MP3/FLAC
- HPF/LPF
- Built-in Bluetooth®
- 10 Presets EQ
- Front USB / AUX
- 24-bit DAC
- 2 PreOuts
- Blue Key illumination
- Remote Control Ready
- SWC Ready
- AOA 2.0 (Android Open Acc)
- Clock

Recommended Retail Price **\$219.95**

Single (Inc GST) \$164.25

5 Buy (Inc GST) \$153.31

Individual orders less than \$300 Ex GST Dealer Price a flat rate freight charge of \$25 Inc GST applies.

Prices, models and/or specifications are subject to change without notice. E. & O.E. All orders are subject to acceptance by Alpine Electronics of Australia Pty. Ltd. The recommended retail price is provided as an indication only and there is no obligation to comply with such price. Prices shown may vary at invoice due to decimal rounding. All prices include Australian Goods & Services Tax (GST) of 10%.



LANDCRUISER / UTES PREMIUM SOUND

Hi-Res
AUDIO



TOYOTA LANDCRUISER 70 SERIES

R2-Series Premium Audio for LC79 and LC76 Series

Vehicle Compatibility

- Landcruiser VDJ 76, 78 & 79
- Compatible 2009>
- R2-S69C (Set) • R2-S69 (Set) • Premium Design Landcruiser Speaker Exocasing • USB Charge • Dash-Mount Tweeters • 'Alpine' Puddle Light

Recommended Retail Price **\$2,299.95**

LC70-R269P (Inc GST) \$1,724.25

ALPINE PROFESSIONAL DEALER INSTALL ONLY

Hi-Res
AUDIO



TOYOTA HILUX

R2-Series Premium Audio for Toyota Hilux N80

Vehicle Compatibility

- N80 1st/2nd Gen (HL20)
- N80 3rd Gen (HL20)
- Compatible 2015-2019
- Compatible 2020>
- R2-S65C (Set) • R2-S65 (Set) • Premium Design Tweeter Housings • Factory Fit Direct Connections • Custom-Tuned Crossover

Recommended Retail Price **\$1,099.95**

HL15-R265 (Inc GST) \$769.30

HL20-R265 (Inc GST) \$769.30

Hi-Res
AUDIO



FORD RANGER PX II/III

R2-Series Premium Audio for Ford Ranger PX II/III

Vehicle Compatibility

- Ford Ranger PX II/III
- Compatible 2016-2017
- R2-S65C (Set) • R2-S65 (Set) • Premium Design Tweeter Housings • Factory Fit Direct Connections • Custom-Tuned Crossover

Recommended Retail Price **\$1,099.95**

RN16-R265 (Inc GST) \$769.30

Hi-Res
AUDIO



MAZDA BT-50

R2-Series Premium Audio for Mazda BT-50

Vehicle Compatibility

- Mazda BT-50
- Compatible 2012-2019
- R2-S65C (Set) • R2-S65 (Set) • Premium Design Tweeter Housings • Factory Fit Direct Connections • Custom-Tuned Crossover

Recommended Retail Price **\$1,099.95**

BT50-R265P (Inc GST) \$769.30

Hi-Res
AUDIO



TOYOTA LANDCRUISER 70 SERIES

R-Series Premium Audio for LC79 and LC76 Series

Vehicle Compatibility

- Landcruiser VDJ 76, 78 & 79
- Compatible 2009>
- R-S69C.2 (Set) • R-S69.2 (Set) • Premium Design Landcruiser Speaker Exocasing • USB Charge • Dash-Mount Tweeters • 'Alpine' Puddle Light

Recommended Retail Price **\$1,999.95**

LC70-R69P (Inc GST) \$1,499.25

ALPINE PROFESSIONAL DEALER INSTALL ONLY

Hi-Res
AUDIO



TOYOTA HILUX

S-Series Premium Audio for Toyota Hilux N80

Vehicle Compatibility

- N80 1st/2nd Gen (HL20)
- N80 3rd Gen (HL20)
- Compatible 2015-2019
- Compatible 2020>
- S2-S65C (Set) • S2-S65 (Set) • Premium Design Tweeter Housings • Factory Fit Direct Connections • Custom-Tuned Crossover

Recommended Retail Price **\$699.95**

HL15-S265 (Inc GST) \$489.30

HL20-S265 (Inc GST) \$489.30

Hi-Res
AUDIO



FORD RANGER PX II/III

S-Series Premium Audio for Ford Ranger PX II/III

Vehicle Compatibility

- Ford Ranger PX II/III
- Compatible 2016-2017
- S2-S65C (Set) • S2-S65 (Set) • Premium Design Tweeter Housings • Factory Fit Direct Connections • Custom-Tuned Crossover

Recommended Retail Price **\$699.95**

RN16-S265 (Inc GST) \$489.30

Hi-Res
AUDIO



MAZDA BT-50

S-Series Premium Audio for Mazda BT-50

Vehicle Compatibility

- Mazda BT-50
- Compatible 2012-2019
- S2-S65C (Set) • S2-S65 (Set) • Premium Design Tweeter Housings • Factory Fit Direct Connections • Custom-Tuned Crossover

Recommended Retail Price **\$699.95**

BT50-S265P (Inc GST) \$489.30

Individual orders less than \$300 Ex GST Dealer Price
a flat rate freight charge of \$25 Inc GST applies.

Prices, models and/or specifications are subject to change without notice. E. & O.E. All orders are subject to acceptance by Alpine Electronics of Australia Pty. Ltd. The recommended retail price is provided as an indication only and there is no obligation to comply with such price. Prices shown may vary at invoice due to decimal rounding. All prices include Australian Goods & Services Tax (GST) of 10%.



EV-SERIES SOUND FOR TESLA



PXE-X121-12EV

12-Channel EV-Series Hi-Res Audio Processor Amplifier

Main Features:

- Hi-Res Audio Certified
- Sampling Rate: 96kHz/24Bit
- Freq. Response: 20Hz-40kHz
- 31 Band P.EQ & G.EQ
- 850W Total RMS
- High & Low Pass Filter
- 12 Hi-Res Channels
- PC & Mobile Sound Tuning

Recommended Retail Price **\$1,499.95**

Single (Inc GST) \$974.97



EV-65CF-T

6.5" EV-Series 2-Way Component Speaker System

Main Features:

- 50W RMS
- 1" Soft-Dome Tweeter
- 200W Peak Power
- Woven Carbon Fibre Cone
- Freq. Response: 65Hz-20kHz
- Strontium Ferrite Magnet
- Nominal Impedance: 4Ohm
- H.A.M.R. Surround

Recommended Retail Price **\$499.95**

Single (Inc GST) \$324.97



EV-40M-T

4" EV-Series 2-Way Component Speaker System

Main Features:

- 40W RMS
- 1" Soft-Dome Tweeter
- 160W Peak Power
- Woven Carbon Fibre Cone
- Freq. Response: 100Hz-20kHz
- Strontium Ferrite Magnet
- Nominal Impedance: 4Ohm
- H.A.M.R. Surround

Recommended Retail Price **\$399.95**

Single (Inc GST) \$259.35



EV-40MR-T

4" EV-Series Component Speaker System

Main Features:

- 40W RMS
- Machine Cut Magnet Cover
- 160W Peak Power
- Woven Carbon Fibre Cone
- Freq. Response: 100Hz-18kHz
- Strontium Ferrite Magnet
- Nominal Impedance: 4Ohm
- H.A.M.R. Surround

Recommended Retail Price **\$299.95**

Single (Inc GST) \$194.35



EV-100SW3-T

10" EV-Series Subwoofer for Model 3

Main Features:

- 100W RMS
- Unit Weight: 6.1kg
- 500W Peak Power
- Woven Carbon Fibre Cone
- Freq. Response: 25Hz-300Hz
- Strontium Ferrite Magnet
- Nominal Impedance: 4+4Ohm
- H.A.M.R. Surround

Recommended Retail Price **\$599.95**

Single (Inc GST) \$389.97



EV-100SWY-T

10" EV-Series Subwoofer for Model Y

Main Features:

- 100W RMS
- Unit Weight: 6.0kg
- 500W Peak Power
- Woven Carbon Fibre Cone
- Freq. Response: 25Hz-300Hz
- Strontium Ferrite Magnet
- Nominal Impedance: 4+4Ohm
- H.A.M.R. Surround

Recommended Retail Price **\$599.95**

Single (Inc GST) \$389.35



Amplifier Harness for Model 3

System Integration Harness for Model 3

Vehicle Compatibility:

	Dual Amplifier:	Single Amplifier:
2021:	■ KCU-TSL21M3-2	■ KCU-TSL21M3-1
2022:	■ KCU-TSL22M3-2	■ KCU-TSL22M3-1

• For MY20 & earlier a third-party harness is required.

Recommended Retail Price **\$299.95**

Single (Inc GST) \$224.96



Amplifier Harness for Model Y

System Integration Harness for Model Y

Vehicle Compatibility:

	Dual Amplifier:	Single Amplifier:
2021:	■ KCU-TSL21MY-2	■ KCU-TSL21MY-1
2022:	■ KCU-TSL22MY-2	■ KCU-TSL22MY-1

• For MY20 & earlier a third-party harness is required.

Recommended Retail Price **\$299.95**

Single (Inc GST) \$224.96

Individual orders less than \$300 Ex GST Dealer Price
a flat rate freight charge of \$25 Inc GST applies.

Prices, models and/or specifications are subject to change without notice. E. & O.E. All orders are subject to acceptance by Alpine Electronics of Australia Pty. Ltd. The recommended retail price is provided as an indication only and there is no obligation to comply with such price. Prices shown may vary at invoice due to decimal rounding. All prices include Australian Goods & Services Tax (GST) of 10%.



EV-SERIES SYSTEMS FOR TESLA



EV-ULT-T3

Ultimate Dual Amplifier System for Model 3

- PXE-X121-12EV (x2)
- EV-100SW3-T
- EV-65CF-T
- EV-40MR-T (x2)
- EV-40M-T
- * Amp Harness Sold Separately

Recommended Retail Price **\$4,699.95**

Single (Inc GST) \$3,054.97



EV-PRO-T3

Professional Amplified System for Model 3

- PXE-X121-12EV
- EV-100SW3-T
- EV-65CF-T
- EV-40MR-T (x2)
- EV-40M-T
- * Amp Harness Sold Separately

Recommended Retail Price **\$3,299.95**

Single (Inc GST) \$2,144.97



EV-OEM-T3

OEM Upgrade System for Model 3

- PXE-X121-12EV
- EV-100SW3-T
- EV-40MR-T
- * Amp Harness Sold Separately

Recommended Retail Price **\$2,199.95**

Single (Inc GST) \$1,429.97



EV-ULT-TY

Ultimate Dual Amplifier System for Model Y

- PXE-X121-12EV (x2)
- EV-100SWY-T
- EV-65CF-T
- EV-40MR-T (x2)
- EV-40M-T
- * Amp Harness Sold Separately

Recommended Retail Price **\$4,699.95**

Single (Inc GST) \$3054.97



EV-PRO-TY

Professional Amplified System for Model Y

- PXE-X121-12EV
- EV-100SWY-T
- EV-65CF-T
- EV-40MR-T (x2)
- EV-40M-T
- * Amp Harness Sold Separately

Recommended Retail Price **\$3,299.95**

Single (Inc GST) \$2,144.97



EV-OEM-TY

OEM Upgrade System for Model Y

- PXE-X121-12EV
- EV-100SWY-T
- EV-40MR-T
- * Amp Harness Sold Separately

Recommended Retail Price **\$2,199.95**

Single (Inc GST) \$1,429.97

Individual orders less than \$300 Ex GST Dealer Price
a flat rate freight charge of \$25 Inc GST applies.

Prices, models and/or specifications are subject to change without notice. E. & O.E. All orders are subject to acceptance by Alpine Electronics of Australia Pty. Ltd. The recommended retail price is provided as an indication only and there is no obligation to comply with such price. Prices shown may vary at invoice due to decimal rounding. All prices include Australian Goods & Services Tax (GST) of 10%.



DIGITAL PRECISION SERIES



DP-653CX

Digital Precision 3-Way Component Network System

Main Features

- 50W RMS
- 240W Peak Power
- Frequency Response: 65Hz-24kHz
- Woven Blue Carbon Woofer Cone

Recommended Retail Price **\$1,199.95**

Single (Inc GST) \$719.40



DP-653

Digital Precision 3-Way Component Speakers

Main Features

- 50W RMS
- 240W Peak Power
- Frequency Response: 65Hz-24kHz
- Woven Blue Carbon Woofer Cone

Recommended Retail Price **\$1,049.95**

Single (Inc GST) \$629.40



DP-65C

Digital Precision 6.5" Component Speakers

Main Features

- 50W RMS
- 240W Peak Power
- Frequency Response: 65Hz-24kHz
- Woven Blue Carbon Woofer Cone

Recommended Retail Price **\$749.95**

Single (Inc GST) \$449.40

4 Buy (Inc GST) \$415.69



DP-35M

Digital Precision 3" Midrange Component Speakers

Main Features

- 50W RMS
- 240W Peak Power
- Frequency Response: 65Hz-6.5kHz
- Woven Blue Carbon Woofer Cone

Recommended Retail Price **\$300.95**

Single (Inc GST) \$180.00



DP-65G

Digital Precision 6.5" Grille's

- For DP Series 65C and 653 Speaker Systems
- Sold Separately
- Hexagonal Mesh Grille Design

Recommended Retail Price **\$49.95**

Single (Inc GST) \$31.85



DP-653NW

Digital Precision 3-Way Crossover Network

- For DP-653 Speaker System
- Allows use of 3-Way System without an Amplifier

Recommended Retail Price **\$149.95**

Single (Inc GST) \$105.00



RUX-C810

Remote Controller for PXE-X800

- Compatible with HDP-D90 & PXE-X800
- Built-in Amplifier
- LCD Display
- Included Installation Bracket

Recommended Retail Price **\$149.95**

Single (Inc GST) \$101.97



PXE-X800

12-Channel Digital Audio Processor

- Compatible for DP Series Speaker System
- Built-in Amplifier
- Optical/Coaxial
- 12-channel RCA audio
- AptX Bluetooth Streaming
- 4 x 25W (Rated Power)
- 4 x 50W (Max Power)

Recommended Retail Price **\$999.95**

Single (Inc GST) \$679.97

Individual orders less than \$300 Ex GST Dealer Price a flat rate freight charge of \$25 Inc GST applies.

Prices, models and/or specifications are subject to change without notice. E. & O.E. All orders are subject to acceptance by Alpine Electronics of Australia Pty. Ltd. The recommended retail price is provided as an indication only and there is no obligation to comply with such price. Prices shown may vary at invoice due to decimal rounding. All prices include Australian Goods & Services Tax (GST) of 10%.



R-SERIES AMPLIFIERS



R2-A150M

R-Series Mono Digital Ultra High Power Amplifier

- 700W RMS x 1 [4Ω@14.4V]
- 1200W RMS x 1 [2Ω@14.4V]
- 1500W RMS x 1 [1Ω@14.4V]
- All-new Advanced Compact Digital Design
- Adjustable LP Crossovers
- Dampening Factor >250
- RUX-KNOB.2 Ready
- Subsonic Filter & Bass EQ

Recommended Retail Price	\$899.95
Single (Inc GST)	\$629.30
4 Buy (Inc GST)	\$584.35



R2-A60F

R-Series 4/3/2 Channel Digital Power Amplifier

- 100W RMS x 4 [4Ω@14.4V]
- 150W RMS x 4 [2Ω@14.4V]
- Bridged 300W RMS x 2 [4Ω@14.4V]
- All-new Advanced Compact Digital Design
- RCA and Speaker Level Inputs
- Bandpass Filter
- Variable High Pass/High Pass - High/Low Pass Filters
- Hi-Res Audio Certified

Recommended Retail Price	\$699.95
Single (Inc GST)	\$489.97
4 Buy (Inc GST)	\$454.97



R2-A75M

R-Series Mono Digital Power Amplifier

- 500W RMS x 1 [4Ω@14.4V]
- 750W RMS x 1 [2Ω@14.4V]
- Frequency Response 10Hz – 400kHz
- All-new Advanced Compact Digital Design
- Adjustable LP Crossovers
- Dampening Factor >250
- RUX-KNOB.2 Ready
- Subsonic Filter & Bass EQ

Recommended Retail Price	\$699.95
Single (Inc GST)	\$489.97
4 Buy (Inc GST)	\$454.97



R-SERIES SPEAKERS



Hi-Res
AUDIO

PROFESSIONAL
EDITION



R2-S653

R-Series 6-1/2" 3-Way Component PRO Speakers

- 100W RMS
- 300W Peak Power
- Hi-Res Audio
- Freq Response: 65Hz-40kHz

Recommended Retail Price **\$949.95**

Single (Inc GST) \$617.47

4 Buy (Inc GST) \$524.85

Hi-Res
AUDIO



R2-S69

R-Series 6 x 9" 2-Way Coaxial Speakers

- 100W RMS
- 300W Peak Power
- Hi-Res Audio
- Freq Response: 60Hz-40kHz

Recommended Retail Price **\$449.95**

Single (Inc GST) \$328.46

4 Buy (Inc GST) \$283.46

Hi-Res
AUDIO

PROFESSIONAL
EDITION



R2-S652

R-Series 6-1/2" 2-Way Component PRO Speakers

- 100W RMS
- 300W Peak Power
- Hi-Res Audio
- Freq Response: 65Hz-40kHz

Recommended Retail Price **\$649.95**

Single (Inc GST) \$422.47

6 Buy (Inc GST) \$359.10

Hi-Res
AUDIO



R2-S65

R-Series 6-1/2" 2-Way Coaxial Speakers

- 100W RMS
- 300W Peak Power
- Hi-Res Audio
- Freq Response: 65Hz-40kHz

Recommended Retail Price **\$329.95**

Single (Inc GST) \$240.86

6 Buy (Inc GST) \$207.87

Hi-Res
AUDIO



R2-S69C

R-Series 6 x 9" 2-Way Component Speakers

- 100W RMS
- 300W Peak Power
- Hi-Res Audio
- Freq Response: 60Hz-40kHz

Recommended Retail Price **\$549.95**

Single (Inc GST) \$401.46

4 Buy (Inc GST) \$346.46

Hi-Res
AUDIO



R2-S65C

R-Series 6-1/2" 2-Way Component Speakers

- 100W RMS
- 300W Peak Power
- Hi-Res Audio
- Freq Response: 65Hz-40kHz

Recommended Retail Price **\$499.95**

Single (Inc GST) \$364.96

6 Buy (Inc GST) \$314.96



R-S68

R-Series 6 x 8" 2-Way Coaxial Speakers

- 100W RMS
- 300W Peak Power
- 1" Silk Dome Tweeter
- Freq Response: 63Hz-29kHz

Recommended Retail Price **\$259.95**

Single (Inc GST) \$168.35

4 Buy (Inc GST) \$163.18



30MC

3" Midrange Component Speakers

- 50W RMS
- 150W Peak Power
- Polypropylene Cone
- Freq Response: 100Hz-20kHz

Recommended Retail Price **\$199.95**

Single (Inc GST) \$129.35

4 Buy (Inc GST) \$119.41

Individual orders less than \$300 Ex GST Dealer Price
a flat rate freight charge of \$25 Inc GST applies.

Prices, models and/or specifications are subject to change without notice. E. & O.E. All orders are subject to acceptance by Alpine Electronics of Australia Pty. Ltd. The recommended retail price is provided as an indication only and there is no obligation to comply with such price. Prices shown may vary at invoice due to decimal rounding. All prices include Australian Goods & Services Tax (GST) of 10%.



R-SERIES SHALLOW SUBWOOFERS



RS-W12D4

12-Inch R-Series High-Performance Shallow Subwoofer with Dual Voice Coil 40hm + 40hm

- 600W RMS
- Neodymium Magnet
- Mounting Depth: 8.25cm
- Alpine Gen.2 DD Linear Circuit
- Cast Aluminium Frame
- Freq. Response: 26Hz-200kHz

Recommended Retail Price **\$999.95**

Single (Inc GST) \$699.97

2 Buy (Inc GST) \$649.97

RS-W12D2

12-Inch R-Series High-Performance Shallow Subwoofer with Dual Coil 20hm + 20hm

- 600W RMS
- Neodymium Magnet
- Mounting Depth: 8.25cm
- Alpine Gen.2 DD Linear Circuit
- Cast Aluminium Frame
- Freq. Response: 26Hz-200kHz

Recommended Retail Price **\$999.95**

Single (Inc GST) \$699.97

2 Buy (Inc GST) \$649.97

RS-W10D4

10-Inch R-Series High-Performance Shallow Subwoofer with Dual Voice Coil 40hm + 40hm

- 600W RMS
- Neodymium Magnet
- Mounting Depth: 8.25cm
- Alpine Gen.2 DD Linear Circuit
- Cast Aluminium Frame
- Freq. Response: 29Hz-200kHz

Recommended Retail Price **\$899.95**

Single (Inc GST) \$629.97

2 Buy (Inc GST) \$584.97

RS-W10D2

10-Inch R-Series High-Performance Shallow Subwoofer with Dual Voice Coil 20hm + 20hm

- 600W RMS
- Neodymium Magnet
- Mounting Depth: 8.25cm
- Alpine Gen.2 DD Linear Circuit
- Cast Aluminium Frame
- Freq. Response: 29Hz-200kHz

Recommended Retail Price **\$899.95**

Single (Inc GST) \$629.97

2 Buy (Inc GST) \$584.97



RS-SB12

12-Inch R-Series Shallow Subwoofer Enclosure

- 600W RMS
- 67.cm (W) x 13cm (H) x 17cm (D)
- Dual 40hm (20hm Load)
- Freq. Response: 26Hz-200kHz

Recommended Retail Price **\$1199.95**

Single (Inc GST) \$839.97

2 Buy (Inc GST) \$779.97

RS-SB10

10-Inch R-Series Shallow Subwoofer Enclosure

- 600W RMS
- 54cm (W) x 13cm (H) x 16cm (D)
- Dual 40hm (20hm Load)
- Freq. Response: 29Hz-200kHz

Recommended Retail Price **\$1149.95**

Single (Inc GST) \$804.97

2 Buy (Inc GST) \$747.47

KTE-RS12G

12" Slim Subwoofer Grille for RS-W12D4/2

- Powdercoat Finish
- Protects your Subwoofer
- Alpine Branded
- Sturdy Construction

Recommended Retail Price **\$89.95**

Single (Inc GST) \$66.56

KTE-RS10G

10" Slim Subwoofer Grille for RS-W10D4/2

- Powdercoat Finish
- Protects your Subwoofer
- Alpine Branded
- Sturdy Construction

Recommended Retail Price **\$89.95**

Single (Inc GST) \$66.56

Individual orders less than \$300 Ex GST Dealer Price a flat rate freight charge of \$25 Inc GST applies.

Prices, models and/or specifications are subject to change without notice. E. & O.E. All orders are subject to acceptance by Alpine Electronics of Australia Pty. Ltd. The recommended retail price is provided as an indication only and there is no obligation to comply with such price. Prices shown may vary at invoice due to decimal rounding. All prices include Australian Goods & Services Tax (GST) of 10%.



R-SERIES SUBWOOFERS



R2-W12D4 / R2-W12D2

R-Series 12" Subwoofer

- 750W RMS
- 2250W Peak Power
- HAMR Surround
- Freq Response: 24Hz-200kHz

Recommended Retail Price	\$549.95
Single (Inc GST)	\$357.47
2 Buy (Inc GST)	\$346.74
4 Buy (Inc GST)	\$331.14



R2-W10D4 / R2-W10D2

R-Series 10" Subwoofer

- 750W RMS
- 2250W Peak Power
- HAMR Surround
- Freq Response: 26Hz-200kHz

Recommended Retail Price	\$499.95
Single (Inc GST)	\$324.97
2 Buy (Inc GST)	\$315.22
4 Buy (Inc GST)	\$301.03



R2-W8D4 / R2-W8D2

R-Series 8" Subwoofer

- 350W RMS
- 1000W Peak Power
- HAMR Surround
- Freq Response: 30Hz-200kHz

Recommended Retail Price	\$349.95
Single (Inc GST)	\$227.47
2 Buy (Inc GST)	\$220.64



SBR-S8D4.2

R-Series 8" Ported Enclosed Subwoofer

- 350W RMS
- 1000W Peak Power
- Ported Enclosure
- Freq Response: 30Hz-200kHz

Recommended Retail Price	\$399.95
Single (Inc GST)	\$259.97
2 Buy (Inc GST)	\$252.17



KTX-H12 / KTX-H10

12" and 10" ProLink Halo Subwoofer Kit

- ProLink Kit for Halo Subwoofer Enclosures
- Includes Front Venting Frame and Rear Bracket Assembly

Recommended Retail Price	\$109.95 / \$99.95
KTX-H12 12" ProLink Kit	\$70.85
KTX-H10 10" ProLink Kit	\$64.35



R2-SB12V / R2-SB12V4

12" R-Series Halo Subwoofer Enclosure

- USA Ported Design
- ProLink Ready (Dual 12")
- 750W RMS
- 2250W Peak Power

Recommended Retail Price	\$699.95
Single (Inc GST)	\$454.97
2 Buy (Inc GST)	\$441.32



R2-SB10V

10" R-Series Halo Subwoofer Enclosure

- USA Ported Design
- ProLink Ready (Dual 10")
- 750W RMS
- 2250W Peak Power

Recommended Retail Price	\$649.95
Single (Inc GST)	\$422.47
2 Buy (Inc GST)	\$409.79



R2-DB8V-TRK

Dual 8" R-Series Preloaded Truck Subwoofer Enclosure

- 750W RMS
- Dual Voice Coil (2Ω Load)
- Shallow Fit Under-seat Design
- Expandable width (40" to 51")

Recommended Retail Price	\$1,499.95
Single (Inc GST)	\$1,049.30
2 Buy (Inc GST)	\$1,018.87

Individual orders less than \$300 Ex GST Dealer Price a flat rate freight charge of \$25 Inc GST applies.

Prices, models and/or specifications are subject to change without notice. E. & O.E. All orders are subject to acceptance by Alpine Electronics of Australia Pty. Ltd. The recommended retail price is provided as an indication only and there is no obligation to comply with such price. Prices shown may vary at invoice due to decimal rounding. All prices include Australian Goods & Services Tax (GST) of 10%.



R-SERIES SUBWOOFERS



KTE-12G.3

12" Subwoofer Grille for R2-W12D4/2

- Powdercoat Finish
- Ezy-Lock Install
- Alpine Branded
- Sturdy Construction

Recommended
Retail Price **\$79.95**

Single (Inc GST) \$51.97



KTE-10G.3

10" Subwoofer Grille for R2-W10D4/2

- Powdercoat Finish
- Ezy-Lock Install
- Alpine Branded
- Sturdy Construction

Recommended
Retail Price **\$69.95**

Single (Inc GST) \$45.47



KTE-8G.3

8" Subwoofer Grille for R2-W8D4/2

- Powdercoat Finish
- Ezy-Lock Install
- Alpine Branded
- Sturdy Construction

Recommended
Retail Price **\$59.95**

Single (Inc GST) \$38.97



S-SERIES AMPLIFIERS



S2-A55V

S-Series 5/3 Channel Power Amplifier

- 60W x 4 + 300W x 1 RMS [2Ω@14.4V]
- 40W x 4 + 200W x 1 RMS [4Ω@14.4V]
- Bridged 120W x 2 [4Ω@14.4V] + 300W x 1 [2Ω@14.4V]
- Hi-Resolution Audio Certified
- RCA and Speaker Level Inputs
- Variable High Pass/Low Pass Filters
- Bass EQ (subwoofer channel)
- Remote Bass Knob Ready (RUX-KNOB.2)

Recommended Retail Price **\$629.95**

Single (Inc GST) \$409.47

4 Buy (Inc GST) \$377.97



S2-A120M

S-Series High Power Mono Power Amplifier

- 600W x 1 [4Ω@14.4V]
- 1200W x 1 [2Ω@14.4V] ■ 1200W x 1 [1Ω@14.4V]
- Bass EQ (subwoofer channel)
- All-new Advanced Digital Design
- RCA and Speaker Level Inputs
- Selectable/Adjustable Crossovers Built-in.
- Auto-Turn On Select Switch Feature
- Remote Bass Knob Ready (RUX-KNOB.2)

Recommended Retail Price **\$649.95**

Single (Inc GST) \$422.47

3 Buy (Inc GST) \$389.97



S2-A36F

S-Series 4/3/2 Channel Power Amplifier

- 60W x 4 RMS [4Ω@14.4V]
- 90W x 4 RMS [2Ω@14.4V]
- Bridged 180W x 2 RMS [4Ω@14.4V]
- Hi-Resolution Audio Certified
- Frequency Response: 10Hz-40kHz (+/-3dB)
- Damping Factor: >100
- Mid-Bass EQ
- RCA and Speaker Level Inputs

Recommended Retail Price **\$469.95**

Single (Inc GST) \$305.47

6 Buy (Inc GST) \$281.97



S2-A60M

S-Series Mono Power Amplifier

- 330W x 1 RMS [4Ω@14.4V]
- 600W x 1 RMS [2Ω@14.4V] ■ 600W x 1 RMS [1Ω@14.4V]
- Bass EQ (subwoofer channel)
- All-new Advanced Digital Design
- RCA and Speaker Level Inputs
- Selectable/Adjustable Crossovers Built-in.
- New Auto-Turn On Select Switch Feature
- Remote Bass Knob Ready (RUX-KNOB.2)

Recommended Retail Price **\$469.95**

Single (Inc GST) \$305.47

6 Buy (Inc GST) \$281.97

Individual orders less than \$300 Ex GST Dealer Price
a flat rate freight charge of \$25 Inc GST applies.

Prices, models and/or specifications are subject to change without notice. E. & O.E. All orders are subject to acceptance by Alpine Electronics of Australia Pty. Ltd. The recommended retail price is provided as an indication only and there is no obligation to comply with such price. Prices shown may vary at invoice due to decimal rounding. All prices include Australian Goods & Services Tax (GST) of 10%.



S-SERIES SPEAKERS



S2-S65C

6-1/2" 2-Way Component Speaker

- 80W RMS
- 240W Peak Power
- Grilles Optional (KTE-S65G)
- Freq Response: 55Hz-40kHz

Recommended Retail Price **\$259.95**

Single (Inc GST)	\$155.40
4 Buy (Inc GST)	\$147.63
8 Buy (Inc GST)	\$142.51
16 Buy (Inc GST)	\$129.62



S2-S80C

8" 2-Way Component Speaker

- 85W RMS
- 260W Peak Power
- HD Polymer Frame
- Freq Response: 55Hz-40kHz

Recommended Retail Price **\$299.95**

Single (Inc GST)	\$194.97
3 Buy (Inc GST)	\$179.96
6 Buy (Inc GST)	\$164.94

Individual orders less than \$300 Ex GST Dealer Price
a flat rate freight charge of \$25 Inc GST applies.



S2-S65

6-1/2" 2-Way Coaxial Speaker

- 80W RMS
- 240W Peak Power
- Grilles Optional (KTE-S65G)
- Freq Response: 55Hz-40kHz

Recommended Retail Price **\$199.95**

Single (Inc GST)	\$119.97
4 Buy (Inc GST)	\$113.97
8 Buy (Inc GST)	\$110.01
16 Buy (Inc GST)	\$100.07



S2-S68

6x8" 2-Way Coaxial Speaker

- 75W RMS
- 230W Peak Power
- HD Polymer Frame
- Freq Response: 75Hz-40kHz

Recommended Retail Price **\$199.95**

Single (Inc GST)	\$129.97
4 Buy (Inc GST)	\$119.96
8 Buy (Inc GST)	\$109.95



S2-S69C

6x9" Component & 3" 2-Way Coaxial Speaker

- 85W RMS
- 260W Peak Power
- Grilles Optional (KTE-S65G)
- Freq Response: 55Hz-40kHz

Recommended Retail Price **\$299.95**

Single (Inc GST)	\$179.97
3 Buy (Inc GST)	\$166.11
6 Buy (Inc GST)	\$152.25



S2-S50

5" 2-Way Coaxial Speaker

- 55W RMS
- 170W Peak Power
- Grilles Optional (KTE-S50G)
- Freq Response: 65Hz-40kHz

Recommended Retail Price **\$149.95**

Single (Inc GST)	\$97.47
4 Buy (Inc GST)	\$89.96
8 Buy (Inc GST)	\$82.46



S2-S69

6x9" 2-Way Coaxial Speaker

- 85W RMS
- 260W Peak Power
- Grilles Optional (KTE-S69G)
- Freq Response: 55Hz-40kHz

Recommended Retail Price **\$219.95**

Single (Inc GST)	\$131.97
3 Buy (Inc GST)	\$121.81
6 Buy (Inc GST)	\$111.65



S2-S40C

4" 2-Way Component Speaker

- 45W RMS
- 140W Peak Power
- HD Polymer Frame
- Freq Response: 120Hz-40kHz

Recommended Retail Price **\$219.95**

Single (Inc GST)	\$131.97
4 Buy (Inc GST)	\$121.81
8 Buy (Inc GST)	\$111.65

Prices, models and/or specifications are subject to change without notice. E. & O.E. All orders are subject to acceptance by Alpine Electronics of Australia Pty. Ltd. The recommended retail price is provided as an indication only and there is no obligation to comply with such price. Prices shown may vary at invoice due to decimal rounding. All prices include Australian Goods & Services Tax (GST) of 10%.



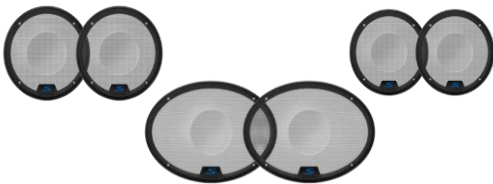


S2-S40

4" 2-Way Coaxial Speaker

- 45W RMS
- 140W Peak Power
- HD Polymer Frame
- Freq Response: 135Hz-40kHz

Recommended Retail Price	\$129.95
Single <i>(Inc GST)</i>	\$77.97
4 Buy <i>(Inc GST)</i>	\$74.07
8 Buy <i>(Inc GST)</i>	\$71.50
16 Buy <i>(Inc GST)</i>	\$65.03



KTE-S65G / KTE-S69G / KTE-S50G

S-Series Speaker Grilles

- Suits S-Series Speakers
- Sold Separately
- Mesh Style Grille with Frame and Logo

Recommended Retail Price	\$24.95
KTE-S65G 6.5" Pair <i>(Inc GST)</i>	\$17.96
KTE-S69G 6x9" Pair <i>(Inc GST)</i>	\$17.96
KTE-S50G 5" Pair <i>(Inc GST)</i>	\$17.96



S-SERIES SUBWOOFERS



S2-W12D4 / S2-W12D2

S-Series 12" Dual Voice Coil Subwoofer

- 600W RMS
- 1800W Peak Power
- HAMR Surround
- Freq Response: 26Hz-200kHz

Recommended Retail Price	\$349.95
Single (Inc GST)	\$227.47
2 Buy (Inc GST)	\$220.64
4 Buy (Inc GST)	\$210.71



S2-SB12

S-Series 12" PrismaLink™ Preloaded Subwoofer Wedge Enclosure

Coming Soon



S2-W10D4 / S2-W10D2

S-Series 10" Dual Voice Coil Subwoofer

- 600W RMS
- 1800W Peak Power
- HAMR Surround
- Freq Response: 26Hz-200kHz

Recommended Retail Price	\$299.95
Single (Inc GST)	\$194.97
4 Buy (Inc GST)	\$189.12
8 Buy (Inc GST)	\$180.61



S2-SB10

S-Series 10" PrismaLink™ Preloaded Subwoofer Wedge Enclosure

Coming Soon



S2-W8D4 / S2-W8D2

S-Series 8" Dual Voice Coil Subwoofer

- 300W RMS
- 900W Peak Power
- HAMR Surround
- Freq Response: 34Hz-200kHz

Recommended Retail Price	\$249.95
Single (Inc GST)	\$162.47
4 Buy (Inc GST)	\$157.59
8 Buy (Inc GST)	\$150.50



S2-SB8

S-Series 8" PrismaLink™ Preloaded Subwoofer Wedge Enclosure

Coming Soon



S-DB8V-TRK

Dual 8" S-Series Preloaded Truck Subwoofer Enclosure

- 600W RMS
- Dual Voice Coil (2Ω Load)
- Shallow Fit Under-seat Design
- Expandable width (40" to 51")

Recommended Retail Price	\$1,399.95
Single (Inc GST)	\$979.30
2 Buy (Inc GST)	\$950.90



KTX-LK12 / KTX-LK10 / KTX-LK8

12", 10", 8" Linking brackets for PrismaLink™ Subwoofer Enclosure

Coming Soon



S-SERIES SUBWOOFERS



SS-SB12

S-Series 12" Shallow Preloaded Subwoofer Enclosure

- 300W RMS
- Optimal Sealed Cabinet
- 300W RMS
- 565(W) x 133 (H) x 333 (D) (mm)
- 2Ω Nominal Impedance
- Freq Response: 30Hz-200Hz
- Sensitivity: (1W/1M): 83dB
- 2nd Gen DD Linear Mag Circuit

Recommended Retail Price **\$749.95**

Single (Inc GST) \$524.30

4 Buy (Inc GST) \$501.83



SS-SB10

S-Series 10" Shallow Preloaded Subwoofer Enclosure

- 300W RMS
- Optimal Sealed Cabinet
- 300W RMS
- 565(W) x 133 (H) x 333 (D) (mm)
- 2Ω Nominal Impedance
- Freq Response: 30Hz-200Hz
- Sensitivity: (1W/1M): 83dB
- 2nd Gen DD Linear Mag Circuit

Recommended Retail Price **\$699.95**

Single (Inc GST) \$489.30

4 Buy (Inc GST) \$468.33



S-SB12V

S-Series 12" Halo Subwoofer with ProLink™

- 600W RMS
- HAMR Surround
- 1800W Peak Power
- 26Hz-200Hz

Recommended Retail Price **\$499.95**

Single (Inc GST) \$324.35

4 Buy (Inc GST) \$314.62



S2-SB10V

S-Series 10" Halo Subwoofer with ProLink™

- 600W RMS
- HAMR Surround
- 1800W Peak Power
- 28Hz-200Hz

Recommended Retail Price **\$449.95**

Single (Inc GST) \$314.97

4 Buy (Inc GST) \$292.47



KTX-H12 / KTX-H10

12" and 10" ProLink Halo Subwoofer Kit

- ProLink Kit for Halo Subwoofer Enclosures
- Includes Front Venting Frame and Rear Bracket Assembly

Recommended Retail Price **\$109.95 / \$99.95**

KTX-H12 12" ProLink Kit \$70.85

KTX-H10 10" ProLink Kit \$64.35



KTE-12G.3

12" Subwoofer Grille for S2-W12D4/2

- Powdercoat Finish
- Alpine Branded
- Ezy-Lock Install
- Sturdy Construction

Recommended Retail Price **\$79.95**

Single (Inc GST) \$51.97



KTE-10G.3

10" Subwoofer Grille for S2-W10D4/2

- Powdercoat Finish
- Alpine Branded
- Ezy-Lock Install
- Sturdy Construction

Recommended Retail Price **\$69.95**

Single (Inc GST) \$45.47



KTE-8G.3

8" Subwoofer Grille for S2-W8D4/2

- Powdercoat Finish
- Alpine Branded
- Ezy-Lock Install
- Sturdy Construction

Recommended Retail Price **\$59.95**

Single (Inc GST) \$38.97

Individual orders less than \$300 Ex GST Dealer Price a flat rate freight charge of \$25 Inc GST applies.

Prices, models and/or specifications are subject to change without notice. E. & O.E. All orders are subject to acceptance by Alpine Electronics of Australia Pty. Ltd. The recommended retail price is provided as an indication only and there is no obligation to comply with such price. Prices shown may vary at invoice due to decimal rounding. All prices include Australian Goods & Services Tax (GST) of 10%.



M-SERIES SPEAKERS



DM-65C

M-Series 6.5 Inch 2-Way Component Speaker

- Peak Power: 200W
- RMS Power: 50 Watts
- Frequency Response: 65Hz-20kHz
- H.A.M.R. Surround
- PP Woofer Cone
- Integrated Wave Guide
- 1" Soft Dome Tweeter
- Ferrite Magnet

Recommended Retail Price	\$199.95
Single (Inc GST)	\$119.40
5 Buy (Inc GST)	\$109.44



DM-65

M-Series 6.5 Inch 2-Way Coaxial Speaker

- Peak Power: 200W
- RMS Power: 50 Watts
- Frequency Response: 65Hz-20kHz
- H.A.M.R. Surround
- PP Woofer Cone
- 1" Soft Dome Tweeter
- Ferrite Magnet

Recommended Retail Price	\$169.95
Single (Inc GST)	\$101.40
5 Buy (Inc GST)	\$92.95



TYPE J & C-SERIES SPEAKERS



SPC-690C

C-Series 6x9 Inch 2-Way Component Speaker

- Peak Power: 300W
- RMS Power: 75 Watts
- Frequency Response: 65Hz-18kHz
- Square Voice Coil with Kapton Bobbin
- PP Woofer Cone
- Integrated Wave Guide
- Butyl Rubber Surround
- Swivel Dome Tweeter

Recommended
Retail Price **\$199.95**

Single (Inc GST) \$119.40

8 Buy (Inc GST) \$109.44



SPJ-691C3

Type-J 6 x 9" 2-Way Coaxial Speaker

- 400W Peak Power Handling
- 60W RMS Power Handling
- Ferrite Magnet
- Freq Response: 30Hz-30kHz

Recommended
Retail Price **\$99.95**

Single (Inc GST) \$49.50

6 Buy (Inc GST) \$47.03

12 Buy (Inc GST) \$44.55



COMPACT AMPLIFIERS



KTA-450

4-Channel Powerpack Amplifier

- Total 400W DPP
- 50W RMS x 4
- Speaker Level Input
- Freq Response 15Hz-50kHz
- HP Filter 60/80/120Hz
- RCA Level Input

Recommended Retail Price **\$359.95**

Single (Inc GST) \$269.96

4 Buy (Inc GST) \$261.86



KTA-200M

Mono Powerpack Amplifier

- Total 400W DPP
- 200W RMS x 1 [2Ω or 4Ω]
- Speaker Level Input
- Freq Response 15Hz-50kHz
- HP Filter 60/80/120Hz
- RCA Level Input

Recommended Retail Price **\$349.95**

Single (Inc GST) \$244.97

4 Buy (Inc GST) \$237.62



KTA-30FW

Weather Resistant Powerpack Amplifier

- 150W x 4 DPP
- 75W x 4 RMS
- Speaker/RCA Inputs
- HPF/LPF Crossovers
- Input Gain Settings
- 2ch/4ch Input

Recommended Retail Price **\$499.95**

Single (Inc GST) \$349.40

4 Buy (Inc GST) \$322.44



KTA-30MW

Weather Resistant Mono Amplifier

- 600W x 1 DPP
- 300W x 1 RMS
- Input Gain Settings
- Bass EQ / Subsonic Filter
- RUX-KNOB.2 Ready
- LP Filter

Recommended Retail Price **\$499.95**

Single (Inc GST) \$349.40

6 Buy (Inc GST) \$322.44



KTP-445U

Powerpack Amplifier

- 45W x 4 RMS
- Independent Filters for Front and Rear Outputs
- RCA Input or High Level Speaker Input
- HP Crossover

Recommended Retail Price **\$299.95**

Single (Inc GST) \$224.25

6 Buy (Inc GST) \$217.53

Individual orders less than \$300 Ex GST Dealer Price a flat rate freight charge of \$25 Inc GST applies.

Prices, models and/or specifications are subject to change without notice. E. & O.E. All orders are subject to acceptance by Alpine Electronics of Australia Pty. Ltd. The recommended retail price is provided as an indication only and there is no obligation to comply with such price. Prices shown may vary at invoice due to decimal rounding. All prices include Australian Goods & Services Tax (GST) of 10%.



OPTIMTM AUDIO PROCESSORS



PXE-C80-88

OPTIMTM 8-Channel Sound Processor and Amplifier with Automatic Sound Tuning

- Optical/Coaxial Inputs
- 8CH RCA Outputs
- Hi-Res Audio Certified
- Anti-EQ for OEM Car
- Quick Auto Tuning through PC and iPhone App Control
- Digital X-Overs
- Compact Design
- 8CH Hi-Level Input for OE System
- Auto EQ for Quick Flat Response
- 6x50W + 2x150W Built-In Amplifier

Recommended Retail Price **\$1,199.95**

Single (Inc GST) \$839.30

4-Buy (Inc GST) \$815.32



KTX-CSP1

Professional Measurement Microphone for OPTIMTM DSP Sound Tuning

- High Quality TRRS Professional Measurement Microphone
- Designed for use with PXE-C80-88 & PXE-C60-66 OPTIMTM DSP's
- 254mm 3.5mm TRRS Braided Extension Cable
- Assists to quickly and accurately measure and calibrate the cabin's acoustic environment
- 1YR Warranty and Owners Manual Included.

Recommended Retail Price **\$89.95**

Single (Inc GST) \$62.96

Individual orders less than \$300 Ex GST Dealer Price a flat rate freight charge of \$25 Inc GST applies.

Prices, models and/or specifications are subject to change without notice. E. & O.E. All orders are subject to acceptance by Alpine Electronics of Australia Pty. Ltd. The recommended retail price is provided as an indication only and there is no obligation to comply with such price. Prices shown may vary at invoice due to decimal rounding. All prices include Australian Goods & Services Tax (GST) of 10%.



PROCESSOR AMPLIFIERS



PXE-X121-12EV

12-Channel EV-Series Hi-Res Audio Processor Amplifier

- Hi-Res Audio Certified
- 31 Band P.EQ & G.EQ
- Freq. Response: 20Hz-40kHz
- High & Low Pass Filter
- 850W Total RMS
- PC & Mobile Sound Tuning
- 12 Hi-Res Channels
- Sampling Rate: 96kHz/24Bit

Recommended Retail Price **\$1,499.95**

Single (Inc GST) \$974.97



PXE-X800RUX

Compact 12-Channel Digital Audio Processor Amplifier + RUX-C810 Remote Commander

- Optical/Coaxial Inputs
- Digital X-Overs
- 12CH RCA Outputs
- Digital Time Correction
- AptX Bluetooth Streaming
- F#1 Status Inspired Design
- 31 Band G/P EQ
- Navi Mix Through Aux Input
- External Control Ready (through UTX-M08S)
- 4x50W + 4X25W Built-In Amplifier

Recommended Retail Price **\$1,139.95**

Single (Inc GST) \$775.15



PXE-X800

Compact 12-Channel Digital Audio Processor Amplifier

- Optical/Coaxial Inputs
- Digital X-Overs
- 12CH RCA Outputs
- Digital Time Correction
- AptX Bluetooth Streaming
- F#1 Status Inspired Design
- 31 Band G/P EQ
- Navi Mix Through Aux Input
- External Control Ready (through UTX-M08S)
- 4x50W + 4X25W Built-In Amplifier

Recommended Retail Price **\$999.95**

Single (Inc GST) \$679.97



PXE-M60-4

Compact 6-Channel Digital Audio Processor Amplifier

- 2xRCA Outputs
- Navi Mix
- 48kHz / 24 Bit High Resolution Bluetooth
- HP / LP Filter
- 31 Band G/P EQ
- 4x25W Built-in Amplifier
- Freq Response: 20Hz-20kHz.
- Digital Time Correction

Recommended Retail Price **\$299.95**

Single (Inc GST) \$194.35

6 Buy (Inc GST) \$179.40

Individual orders less than \$300 Ex GST Dealer Price a flat rate freight charge of \$25 Inc GST applies.

Prices, models and/or specifications are subject to change without notice. E. & O.E. All orders are subject to acceptance by Alpine Electronics of Australia Pty. Ltd. The recommended retail price is provided as an indication only and there is no obligation to comply with such price. Prices shown may vary at invoice due to decimal rounding. All prices include Australian Goods & Services Tax (GST) of 10%.



PROCESSOR AMPLIFIER AUDIO SYSTEMS



X800-DP653RUX / X800-DP653

DP-Series 3-Way Front & 2-Way Rear Audio System with PXE-X800 Processor Amplifier

Contains:

- DP-653 (Front)
- DP-65C (Rear)
- PXE-X800
- RUX-C810

Recommended Retail Price **\$2,939.95**

X800-DP653RUX (Inc GST) \$1,763.97

Contains:

- DP-653 (Front)
- DP-65C (Rear)
- PXE-X800

Recommended Retail Price **\$2,789.95**

X800-DP653 (Inc GST) \$1,673.97



X800-DP652RUX / X800-DP652

DP-Series 2-Way Front & 2-Way Rear Audio System with PXE-X800 Processor Amplifier

Contains:

- DP-65C (Front)
- DP-65C (Rear)
- PXE-X800
- RUX-C810

Recommended Retail Price **\$2,639.95**

X800-DP652RUX (Inc GST) \$1,583.97

Contains:

- DP-65C (Front)
- DP-65C (Rear)
- PXE-X800

Recommended Retail Price **\$2,489.95**

X800-DP652 (Inc GST) \$1,493.97



X800-RS653RUX / X800-RS653

R2-Series 3-Way Front & 2-Way Rear Audio System with PXE-X800 Processor Amplifier

Contains:

- R2-653 (Front)
- R2-65C (Rear)
- PXE-X800
- RUX-C810

Recommended Retail Price **\$2,419.95**

X800-RS653RUX (Inc GST) \$1,572.97

Contains:

- R2-653 (Front)
- R2-65C (Rear)
- PXE-X800

Recommended Retail Price **\$2,269.95**

X800-RS653 (Inc GST) \$1,475.47



X800-RS652RUX / X800-RS652

R2-Series 2-Way Front & 2-Way Rear Audio System with PXE-X800 Processor Amplifier

Contains:

- R2-65C (Front)
- R2-65C (Rear)
- PXE-X800
- RUX-C810

Recommended Retail Price **\$2,439.95**

X800-RS652RUX (Inc GST) \$1,585.97

Contains:

- R2-65C (Front)
- R2-65C (Rear)
- PXE-X800

Recommended Retail Price **\$2,289.95**

X800-RS652 (Inc GST) \$1,488.47

Individual orders less than \$300 Ex GST Dealer Price a flat rate freight charge of \$25 Inc GST applies.

Prices, models and/or specifications are subject to change without notice. E. & O.E. All orders are subject to acceptance by Alpine Electronics of Australia Pty. Ltd. The recommended retail price is provided as an indication only and there is no obligation to comply with such price. Prices shown may vary at invoice due to decimal rounding. All prices include Australian Goods & Services Tax (GST) of 10%.



POWERED SUBWOOFERS



PWE-S8

8" Compact High-Performance Subwoofer

- 140W Max Amplifier
- Quad Voice Coil
- Variable Low Pass Filter
- Built-In Amplifier
- Cast Metal Construction
- Freq Response: 25Hz-152kHz

Recommended
Retail Price **\$399.95**

Single <i>(Inc GST)</i>	\$271.32
4 Buy <i>(Inc GST)</i>	\$257.75
8 Buy <i>(Inc GST)</i>	\$244.19



PWE-M770

7" Compact High-Performance Subwoofer

- 150W RMS
- 300W Peak Power
- Variable Low Pass Filter
- Remote Controller Ready
- Cast Metal Construction
- Built-In Amplifier
- Freq Response: 10Hz-150Hz
- High Excursion Square Woofer Cone

Recommended
Retail Price **\$349.95**

Single <i>(Inc GST)</i>	\$226.85
3 Buy <i>(Inc GST)</i>	\$209.40



BASS SERIES SUBWOOFERS



SBW-D12S4

Bass Series 12" Dual Subwoofer Enclosure

- Custom Sealed Dual Subwoofer Enclosure
- Dual Bass Line Series Subwoofer Pre-Installed
- 500W RMS Power Handling
- 1500W Peak Power Handling
- 12" Dual Configuration 2 Ohm Impedance
- Progressive Wavelet Ribs (P.W.R) Design
- Heavy gauge Screw Terminals
- Polypropylene and Mica Cone
- Polyfoam Surround
- High Strength Custom Steel Frame
- Progressive Polyester Spider
- Optimised Magnetic Circuit

Recommended Retail Price	\$459.95
Single (Inc GST)	\$332.78

SBW-S12S4

Bass Series 12" Single Subwoofer Enclosure

- Custom Sealed Subwoofer Enclosure
- W12D4 Bass Series Subwoofer Pre-Installed
- 250W RMS Power Handling
- 750W Peak Power Handling
- 12" Single 4 Ohm Subwoofer
- Progressive Wavelet Ribs (P.W.R) Design
- Heavy gauge Screw Terminals
- Polypropylene and Mica Cone
- Polyfoam Surround
- High Strength Custom Steel Frame
- Progressive Polyester Spider
- Optimised Magnetic Circuit

Recommended Retail Price	\$299.95
Single (Inc GST)	\$194.35
4 Buy (Inc GST)	\$184.43

W12S4

Bass Series 12" Single Subwoofer

- 250W RMS Power Handling
- 750W Peak Power Handling
- 12" Single 4 Ohm Subwoofer
- Progressive Wavelet Ribs (P.W.R) Design
- Heavy gauge Screw Terminals
- Polypropylene and Mica Cone
- Polyfoam Surround
- High Strength Custom Steel Frame
- Progressive Polyester Spider
- Optimised Magnetic Circuit
- 2 Piece Yoke with Vented Pole Motor Structure
- 8 AWG Push Terminals

Recommended Retail Price	\$159.95
Single (Inc GST)	\$103.35
2 Buy (Inc GST)	\$95.40

W10S4

Bass Series 10" Single Subwoofer

- 250W RMS Power Handling
- 750W Peak Power Handling
- 12" Single 4 Ohm Subwoofer
- Progressive Wavelet Ribs (P.W.R) Design
- Heavy gauge Screw Terminals
- Polypropylene and Mica Cone
- Polyfoam Surround
- High Strength Custom Steel Frame
- Progressive Polyester Spider
- Optimised Magnetic Circuit
- 2 Piece Yoke with Vented Pole Motor Structure
- 8 AWG Push Terminals

Recommended Retail Price	\$149.95
Single (Inc GST)	\$101.32
2 Buy (Inc GST)	\$96.85

Individual orders less than \$300 Ex GST Dealer Price a flat rate freight charge of \$25 Inc GST applies.

Prices, models and/or specifications are subject to change without notice. E. & O.E. All orders are subject to acceptance by Alpine Electronics of Australia Pty. Ltd. The recommended retail price is provided as an indication only and there is no obligation to comply with such price. Prices shown may vary at invoice due to decimal rounding. All prices include Australian Goods & Services Tax (GST) of 10%.





CDA-118M

CD/MP3 Receiver for Marine Application

- 50Watts x 4 Built-in Amp
- IPx5 Waterproof
- USB Made For iPod
- Aux Input
- Dual Speaker Zone Volume Control

Recommended Retail Price	\$599.95
Single (Inc GST)	\$407.32
4 Buy (Inc GST)	\$386.98

KTA-30FW

Weather Resistant Powerpack Amplifier

- 150W x 4 DPP
- 2ch/4ch Input
- 75W x 4 RMS
- HPF/LPF Crossovers
- Speaker/RCA Input
- Input Gain Settings

Recommended Retail Price	\$499.95
Single (Inc GST)	\$349.40
4 Buy (Inc GST)	\$322.44

KTA-30MW

Weather Resistant Mono Amplifier

- 600W x 1 DPP
- 2ch/4ch Input
- 300W x 1 RMS
- LP Crossover
- Bass EQ / Subsonic Filter
- RUX-KNOB.2 Ready

Recommended Retail Price	\$499.95
Single (Inc GST)	\$349.40
6 Buy (Inc GST)	\$322.44

PSS-SX01

Weather-Resistant Bluetooth Amplified Sound System

- 225W Peak Power
- Bluetooth Adaptor included
- 90W RMS
- KTA-30MW Amplifier
- Freq Response:50Hz-22 kHz
- Rail Mounted

Recommended Retail Price	\$1,299.95
Single (Inc GST)	\$883.32



SPS-M601 / SPS-M601W

6-1/2" 2-Way Coaxial Marine Speaker (Silver / White)

- 100W Peak Power
- Available in White
- 30W RMS
- Freq Response:45Hz-22kHz
- IPx5 Waterproof
- Impedance: 4 ohm

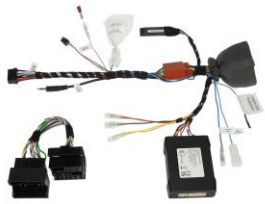
Recommended Retail Price	\$149.95
Single (Inc GST)	\$101.32
4 Buy (Inc GST)	\$96.25

Individual orders less than \$300 Ex GST Dealer Price
a flat rate freight charge of \$25 Inc GST applies.

Prices, models and/or specifications are subject to change without notice. E. & O.E. All orders are subject to acceptance by Alpine Electronics of Australia Pty. Ltd. The recommended retail price is provided as an indication only and there is no obligation to comply with such price. Prices shown may vary at invoice due to decimal rounding. All prices include Australian Goods & Services Tax (GST) of 10%.



ACCESSORIES



APF-X303VW

CAN UART Harness for VW Vehicles

■ Plug-and-play wiring harness for VW platform (MIB-PQ) vehicles

Recommended Retail Price **\$449.95**

Single (Ex GST) \$314.96



CP2-UNI.2

Universal and Learning Steering Wheel Control

■ Universal Steering Wheel Interface

Recommended Retail Price **\$129.95**

Single (Inc GST) \$90.30



KCE-SP2R

Speaker Level to RCA Cable

■ Speaker to RCA Cable for High Level to RCA Input

Recommended Retail Price **\$19.95**

Single (Inc GST) \$12.35



KWE-DY01G6

Dynaudio Factory Audio Output Level Adapter

■ For Vehicles Equipped with Dynaudio Sound System

Recommended Retail Price **\$39.95**

Single (Inc GST) \$27.30



KCE-USB3

Universal USB Input cable

■ Flush Mount USB Extension Cable

Recommended Retail Price **\$29.95**

Single (Inc GST) \$19.72



KCU-Y60HU

Toyota USB / HDMI Input Cable

■ For Toyota and suitable Japan Vehicles 1.5 Mtr Cable

Recommended Retail Price **\$89.95**

Single (Inc GST) \$60.52



KCU-315UH

Flush Mount with Flap Cover USB / HDMI Input Cable

■ For Use with PKG-RSE3HDMI 4.5Mtr Cable

Recommended Retail Price **\$99.95**

Single (Inc GST) \$67.32



KCE-CX800

PXE-X800 to UTX-M08S Communication Cable

■ Control of PXE-X800 source and EQ settings through UTX-M08S

Recommended Retail Price **\$59.95**

Single (Ex GST) \$41.30



USB-SQR01

Square Flush Mount USB / HDMI Input Cable

■ Round Socket Fitment, 1.5Mtr Cable

Recommended Retail Price **\$79.95**

Single (Inc GST) \$53.72



CAM-VW-GLH

Moving Guideline Camera Retention for VW

■ Allows Retention of Moving Guidelines in Factory Camera

Recommended Retail Price **\$349.95**

Single (Inc GST) \$244.97



KPX-100B

Idle Stop / Start Power Booster

■ For Idle Stop / Start & Ignition Voltage Drop Applications

Recommended Retail Price **\$199.95**

Single (Inc GST) \$135.32



KTX-CSP1

Measurement Microphone for OPTIM DSP Tuning

■ Allows Measurement of Cabin Environment for OPTIM8/6

Recommended Retail Price **\$89.95**

Single (Inc GST) \$62.96

Individual orders less than \$300 Ex GST Dealer Price
a flat rate freight charge of \$25 Inc GST applies.

Prices, models and/or specifications are subject to change without notice. E. & O.E. All orders are subject to acceptance by Alpine Electronics of Australia Pty. Ltd. The recommended retail price is provided as an indication only and there is no obligation to comply with such price. Prices shown may vary at invoice due to decimal rounding. All prices include Australian Goods & Services Tax (GST) of 10%.



ACCESSORIES



RUX-KNOB.2

Bass Control Knob For Alpine Amplifier/Processors

■ Compatible with Specific Alpine Amplifiers and Processors

Recommended Retail Price **\$69.95**

Single (Inc GST) \$47.57



RUE-4350

AV IR Wireless Remote Control

■ Palm Size Audio Remote Control with Phone Button

Recommended Retail Price **\$49.95**

Single (Inc GST) \$31.85



DVE-5300G

Optical / DVD Player suitable for Volkswagen Golf 7

■ For Glovebox Fitment – insert may be required if OEM DVD not originally installed

Recommended Retail Price **\$599.95**

Single (Inc GST) \$437.27



KAE-HF11DA

Antiglare Protect Film for Alpine iLX-F511A

■ Protects the display from finger prints and improves visibility

Recommended Retail Price **\$49.95**

Single (Inc GST) \$34.30



KCE-100HD

HDMI Cable

■ Male to Male Slim Style HDMI Cable

Recommended Retail Price **\$29.95**

Single (Inc GST) \$18.85



KAE-HF9DA

Antiglare Protect Film for Alpine iLX-F509A

■ Protects the display from finger prints and improves visibility

Recommended Retail Price **\$49.95**

Single (Inc GST) \$34.30



RUX-C810

Remote Controller for Alpine DSP Products

■ Compatible with HDP-D90 and PXEX800 ■ Rotary Encoder with Blue Illumination ■ LCD Display ■ Included Installation Bracket

Recommended Retail Price **\$149.95**

Single (Inc GST) 101.97



KTX-HF9

Antiglare Protect Film for Alpine Halo9 Series

■ Protects the display from finger prints and improves visibility

Recommended Retail Price **\$49.95**

Single (Inc GST) \$34.30



RUE-BK01A

Wireless Volume and Camera Control Knob

■ Compatible with iLX-507A, iLX-F509A, iLX-F511A

Recommended Retail Price **\$149.95**

Single (Inc GST) \$104.97

Single (Inc GST) \$102.17

