

Bluetooth® Software Update Manual with Android Phones

Applicable from 2012 products
CDE-13xBT & CDE-W235BT & CDA-137BTi



ALPINE ELECTRONICS GmbH
Wilhelm-Wagenfeld-Straße 1-3,
80807 München, Germany
Phone 089-32 42 640

ALPINE ELECTRONICS OF U.K., LTD.
Alpine House
Fletchamstead Highway, Coventry CV4 9TW, U.K.
Phone 0870-33 33 763

ALPINE ELECTRONICS FRANCE S.A.R.L.
(RCS PONTOISE B 338 101 280)
98, Rue de la Belle Etoile, Z.I. Paris Nord II,
B.P 50016, 95945 Roissy Charles De Gaulle
Cedex, France
Phone 01-48638989

ALPINE ITALIA S.p.A.
Viale C. Colombo 8, 20090 Trezzano
Sul Naviglio (MI), Italy
Phone 02-484781

ALPINE ELECTRONICS DE ESPAÑA, S.A.
Portal de Gamarra 36, Pabellón, Pabellón, 32
01013 Vitoria (Alava)-APDO 133, Spain
Phone 945-283588

Introduction

This manual describes the steps required for updating the Head Units Bluetooth firmware. Read all warnings and steps carefully before performing the update.

Improvements

The update improves the following points:

- The Head Units compatibility will be improved from AVRCP1.3 to AVRCP1.4
- Compatibility with new mobile phones.
- iOS6 Bluetooth Audio - displaying the tag information on the Head Unit
- iOS6 Bluetooth Audio - ability to control the iPhone's music player from the Head Unit

Warning



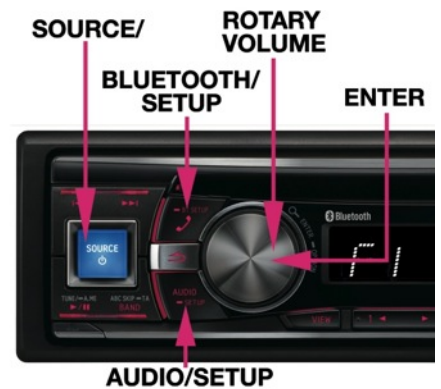
WARNING – Do NOT update the Bluetooth firmware while driving! ACC OFF, removal of power, or unplugging of the USB stick during the update process will damage your device! Make sure you have a stable power supply!

Requirements

Android phone with "**Bluetooth File Transfer**" APP from Google Play Store

Head Unit Setup Button Illustration

The illustration shows the buttons that shall be used during the updating procedure. This illustration is based on the CDE-133BT model. The button locations will be different on some models. Please refer to the owner's manual for your specific model.



Download Bluetooth Firmware and Transfer App to Phone

You can find the latest Bluetooth firmware update on your regions Alpine website. This file has to be copied to your Android phone for this update. You can find it at your local Alpine website at www.alpine-europe.com

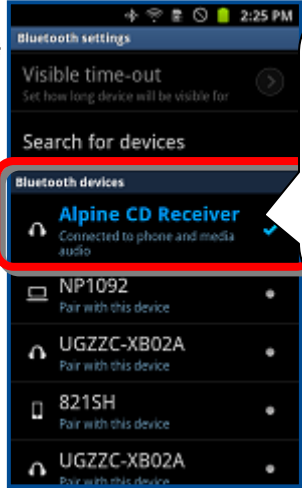
Alpine website at www.alpine-europe.com

2. Download and install the "**Bluetooth File Transfer**" App from the Google play store.



Preparing the update

1. Pair your android device and the Head Unit using the android device's BT menu



As you can see, the phone shows the Alpine CD Receiver as "Connected to phone and media audio"

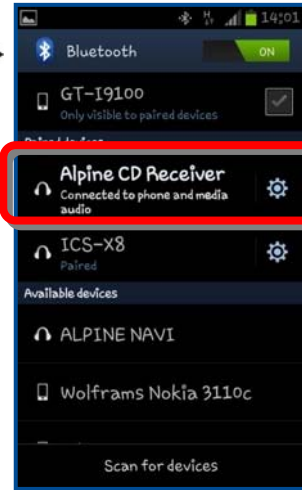
2. Select "PAIRED DEV" from the Head Units BT setup menu.



3. Select "CONNECTED DEVICE" and press "ENTER" key.



4. Select "DISCONNECT" and press "ENTER".



After disconnecting, Alpine CD Receiver is written in white, (not in blue)

5. The Android device is still shown but disconnected (* is missing in front of device name)



Updating the BT firmware

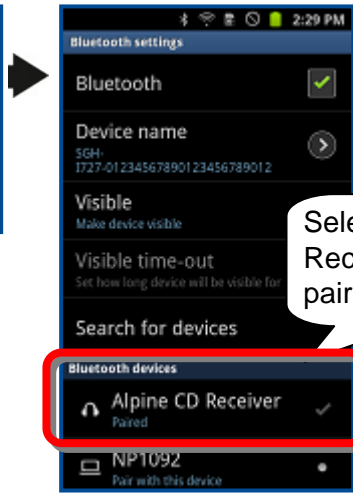
6. Select "FW UPDATE" from BT setup menu



7. Select "UPDATE YES" and press ENTER key

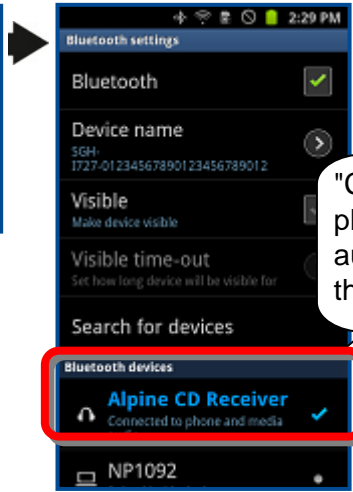


8. After the Head Unit displays "WAITING", you must reconnect the phone using the Android device's setup menu



Select "Alpine CD Receiver" from paired device list.

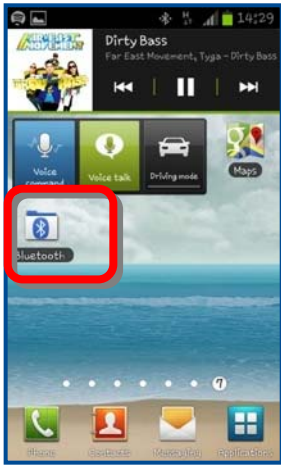
9. The Bluetooth icon will be shown on the display of the Head Unit.



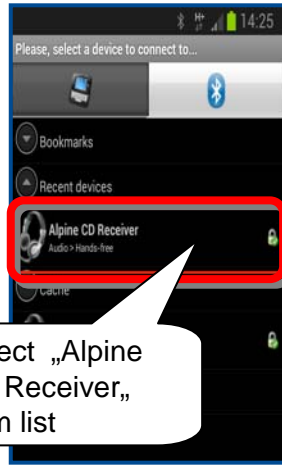
"Connected to phone and media audio" is shown on the Android device

Updating the BT firmware

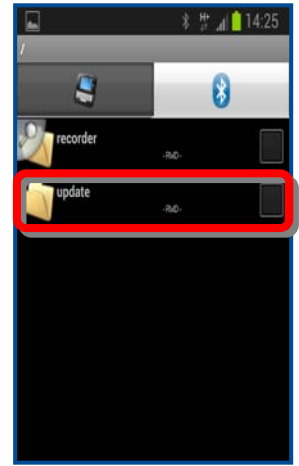
10. Start the "Bluetooth File Transfer" APP on your Android device



11. Select the BT ICON, then select the "ALPINE CD RECEIVER" from the list.



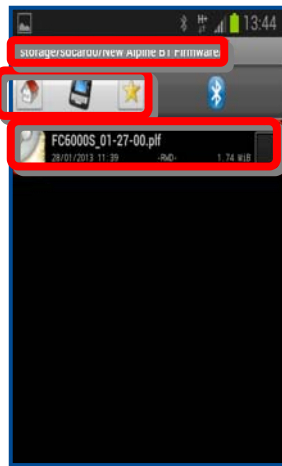
12. Two Folders will be displayed. Select (open) the "update" folder.



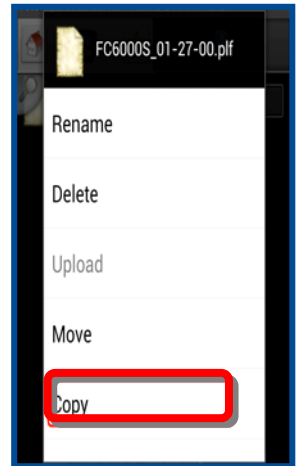
13. You should now see an empty folder



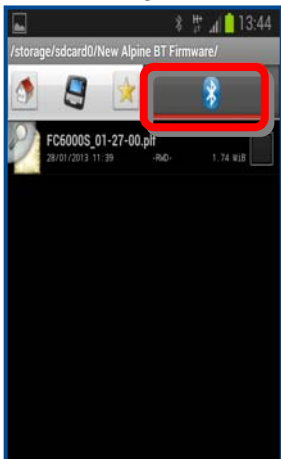
14. Push the "HOME" button and browse to update file FC6000S_01-27-00.plf



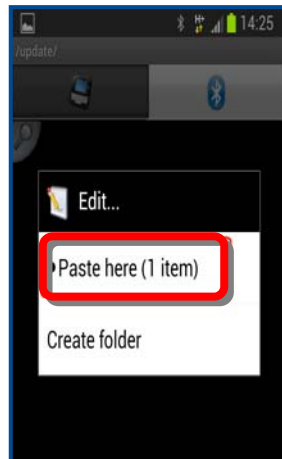
15. Push and hold (long push) the update file and select "Copy"



16. Now push the BT button again



17. Push and hold the empty folder and select "Paste here"



18. During transmission, this progress bar is displayed



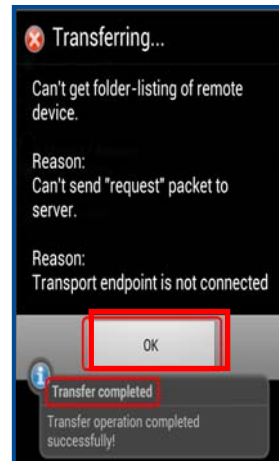
Updating the BT firmware

19. The Head Unit will display: "FIRMWARE UPDATING DON'T TOUCH ANY BUTTON" during transmission, and after transmission.



Even though the progress bar is completed after 40 seconds, the update can take up to 5 minutes. Please do not interrupt the update process.

20. After file transfer is ended, BT indicator will disappear



This error message MIGHT BE shown. Ignore it. Important is the small popup stating "Transfer completed"

21. After update has finished (~5 min.), The Head Unit will show "FIRMWARE UPDATED, PLEASE PUSH ANY BUTTON"



Checking the Firmware Version

22. Select "FW VERSION" from the Bluetooth Setup menu.



23. The updated software version should be displayed. (ex. 01.27.00)

